

# UGP2 Monoclonal antibody

Catalog Number: 68381-1-Ig

## Basic Information

<b>Catalog Number:</b> 68381-1-Ig	<b>GenBank Accession Number:</b> BC002954	<b>Purification Method:</b> Protein A purification
<b>Size:</b> 150ul , Concentration: 1000 ug/ml by Nanodrop;	<b>GeneID (NCBI):</b> 7360	<b>CloneNo.:</b> 1G11G6
<b>Source:</b> Mouse	<b>UNIPROT ID:</b> Q16851	<b>Recommended Dilutions:</b> WB 1:5000-1:50000 IHC 1:1000-1:4000
<b>Isotype:</b> IgG2b	<b>Full Name:</b> UDP-glucose pyrophosphorylase 2	
<b>Immunogen Catalog Number:</b> AG33160	<b>Calculated MW:</b> 56 kDa	
	<b>Observed MW:</b> 50-56 kDa	

## Applications

### Tested Applications:

WB, IHC, ELISA

### Species Specificity:

Human, mouse, Rat, Pig, Rabbit

**Note-IHC: suggested antigen retrieval with TE buffer pH 9.0; (\*) Alternatively, antigen retrieval may be performed with citrate buffer pH 6.0**

### Positive Controls:

**WB :** HEK-293 cells, pig liver tissue, LNCaP cells, rabbit liver tissue, rat liver tissue, mouse liver tissue

**IHC :** human liver cancer tissue,

## Background Information

UDP-glucose pyrophosphorylase 2 (UGP2, synonyms: UDPG, UGPP2, UDPGP2, Phc379) is an important intermediary in mammalian carbohydrate interconversions. It transfers a glucose moiety from glucose-1-phosphate to MgUTP and forms UDP-glucose and MgPPi. In liver and muscle tissue, UDP-glucose is a direct precursor of glycogen; in lactating mammary gland it is converted to UDP-galactose which is then converted to lactose. So far two isoforms are encoded by two transcript variants have been found.

## Storage

### Storage:

Store at -20°C. Stable for one year after shipment.

### Storage Buffer:

PBS with 0.02% sodium azide and 50% glycerol pH 7.3.

Aliquoting is unnecessary for -20°C storage

\*\*\* 20ul sizes contain 0.1% BSA

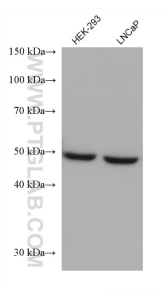
For technical support and original validation data for this product please contact:

T: 1 (888) 4PTGLAB (1-888-478-4522) (toll free in USA), or 1(312) 455-8498 (outside USA)

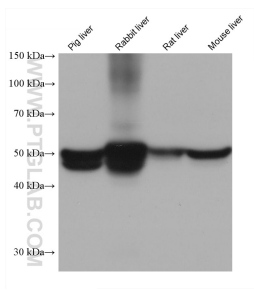
E: [proteintech@ptglab.com](mailto:proteintech@ptglab.com)  
W: [ptglab.com](http://ptglab.com)

This product is exclusively available under Proteintech Group brand and is not available to purchase from any other manufacturer.

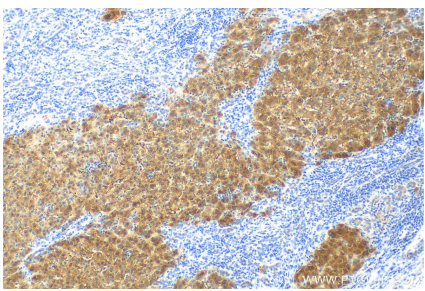
Selected Validation Data



Various lysates were subjected to SDS PAGE followed by western blot with 68381-1-Ig (UGP2 antibody) at dilution of 1:10000 incubated at room temperature for 1.5 hours.



Various lysates were subjected to SDS PAGE followed by western blot with 68381-1-Ig (UGP2 antibody) at dilution of 1:10000 incubated at room temperature for 1.5 hours.



Immunohistochemical analysis of paraffin-embedded human liver cancer tissue slide using 68381-1-Ig (UGP2 antibody) at dilution of 1:2000 (under 10x lens). Heat mediated antigen retrieval with Tris-EDTA buffer (pH 9.0).