

For Research Use Only

# DPP4/CD26 Monoclonal antibody, PBS Only (Capture)

Catalog Number: 68383-1-PBS



## Basic Information

<b>Catalog Number:</b> 68383-1-PBS	<b>GenBank Accession Number:</b> BC013329	<b>Purification Method:</b> Protein G purification
<b>Size:</b> 100ug , Concentration: 1mg/ml by Nanodrop;	<b>GeneID (NCBI):</b> 1803	<b>CloneNo.:</b> 2G6D11
<b>Source:</b> Mouse	<b>UNIPROT ID:</b> P27487	
<b>Isotype:</b> IgG1	<b>Full Name:</b> dipeptidyl-peptidase 4	
<b>Immunogen Catalog Number:</b> EG0157	<b>Calculated MW:</b> 88 kDa	
	<b>Observed MW:</b> 110 kDa	

## Applications

**Tested Applications:**  
WB, IF/ICC, Sandwich ELISA, Indirect ELISA, Sample test

**Species Specificity:**  
human, pig, rabbit

## Product Information

68383-1-PBS targets DPP4/CD26 as part of a matched antibody pair:

MP50051-1: 68383-1-PBS capture and 68383-2-PBS detection (validated in Sandwich ELISA)

Unconjugated mouse monoclonal antibody pair in PBS only (BSA and azide free) storage buffer at a concentration of 1 mg/mL, ready for conjugation.

This conjugation ready format makes antibodies ideal for use in many applications including: ELISAs, multiplex assays requiring matched pairs, mass cytometry, and multiplex imaging applications. Antibody use should be optimized by the end user for each application and assay.

## Background Information

CD26, also known as DPP4 (dipeptidyl peptidase-4), is a 110 kDa type II cell-surface glycoprotein widely expressed on T cells, activated B cells, activated NK cells and myeloid cells as well as on epithelial cells, fibroblasts, mesothelium, and endothelial cells of a variety of tissues (PMID:33777580; 26919392). It has ecto-enzyme activity in its extracellular domain and cleaves amino-terminal dipeptides with either L-proline or L-alanine at the penultimate position (PMID: 9553764). CD26 plays roles in diverse biological processes such as immunoregulation, glucose homeostasis, and tumorigenesis (PMID: 33777580).

## Storage

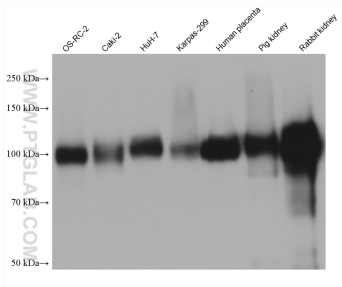
**Storage:**  
Store at -80°C.

**Storage Buffer:**  
PBS only, pH7.3

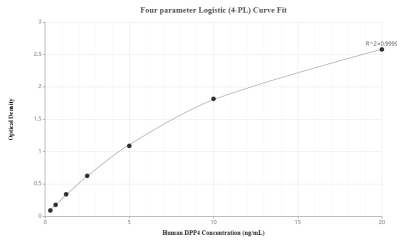
For technical support and original validation data for this product please contact:  
T: 1 (888) 4PTGLAB (1-888-478-4522) (toll free in USA), or 1(312) 455-8498 (outside USA)  
E: [proteintech@ptglab.com](mailto:proteintech@ptglab.com)  
W: [ptglab.com](http://ptglab.com)

This product is exclusively available under Proteintech Group brand and is not available to purchase from any other manufacturer.

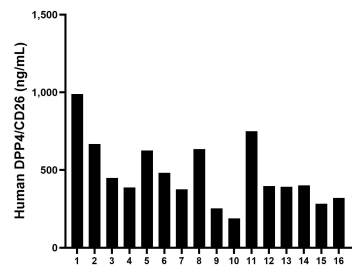
# Selected Validation Data



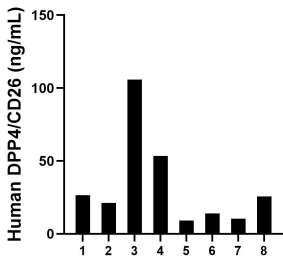
Various lysates were subjected to SDS PAGE followed by western blot with 68383-1-Ig (DPP4/CD26 antibody) at dilution of 1:10000 incubated at room temperature for 1.5 hours. This data was developed using the same antibody clone with 68383-1-PBS in a different storage buffer formulation.



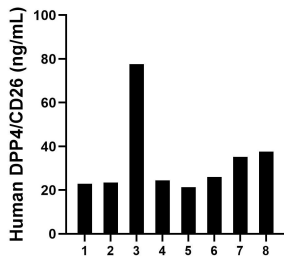
Sandwich ELISA standard curve of MP50051-1, DPP4 Monoclonal Matched Antibody Pair, PBS Only. Capture antibody: 68383-1-PBS. Detection antibody: 68383-2-PBS. Standard: Eg0157. Range: 0.313-20 ng/mL.



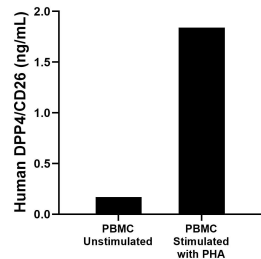
Serum of sixteen individual healthy human donors was measured. The DPP4/CD26 concentration of detected samples was determined to be 475.10 ng/mL with a range of 189.59-990.11 ng/mL.



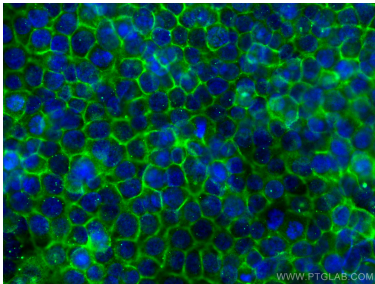
Urine of eight individual healthy human donors was measured. The DPP4/CD26 concentration of detected samples was determined to be 33.23 ng/mL with a range of 9.07-105.84 ng/mL.



Saliva of eight individual healthy human donors was measured. The DPP4/CD26 concentration of detected samples was determined to be 33.57 ng/mL with a range of 21.27-77.69 ng/mL.



Human peripheral blood mononuclear cells (PBMC) were cultured unstimulated or stimulated with 10  $\mu$ g/mL PHA for 5 days. The mean DPP4/CD26 concentration was determined to be 0.17 ng/mL in unstimulated PBMC supernatant, 1.84 ng/mL in PHA stimulated PBMC supernatant.



Immunofluorescent analysis of (-20°C Methanol) fixed HuH-7 cells using DPP4/CD26 antibody (68383-1-Ig, Clone: 2G6D11 ) at dilution of 1:800 and CoraLite®488-Conjugated AffiniPure Goat Anti-Mouse IgG(H+L). This data was developed using the same antibody clone with 68383-1-PBS in a different storage buffer formulation.