

For Research Use Only

ALDOB Monoclonal antibody

Catalog Number: 68396-1-Ig



Basic Information

Catalog Number: 68396-1-Ig	GenBank Accession Number: BC029399	Purification Method: Protein A purification
Size: 150ul , Concentration: 1000 ug/ml by Nanodrop;	GeneID (NCBI): 229	CloneNo.: 3D2E4
Source: Mouse	UNIPROT ID: P05062	Recommended Dilutions: WB 1:5000-1:50000 IF/ICC 1:400-1:1600
Isotype: IgG2a	Full Name: aldolase B, fructose-bisphosphate	
Immunogen Catalog Number: AG12823	Calculated MW: 316 aa, 35 kDa	
	Observed MW: 35-40 kDa	

Applications

Tested Applications: WB, IF/ICC, ELISA	Positive Controls:
Species Specificity: Human, mouse, rat, rabbit	WB : rat kidney tissue, human urine sample, rabbit liver tissue, rat liver tissue, mouse liver tissue, mouse kidney tissue
	IF/ICC : HepG2 cells,

Background Information

Fructose-1,6-bisphosphate aldolase is a glycolytic enzyme that catalyzes the reversible conversion of fructose-1,6-bisphosphate to glyceraldehyde 3-phosphate and dihydroxyacetone phosphate. Vertebrates have 3 aldolase isozymes, aldolase A (ALDOA), B (ALDOB), and C (ALDOC). Deficiency of this enzyme ALDOB causes an accumulation of fructose-1-phosphate after fructose intake, which results in toxic symptoms like vomiting, hypoglycemia, jaundice, elevated liver enzymes and hepatomegaly (PMID:22375183). This antibody may detect ALDOA.

Storage

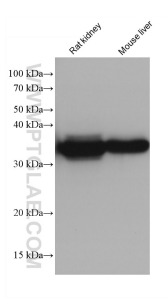
Storage:
Store at -20°C. Stable for one year after shipment.
Storage Buffer:
PBS with 0.02% sodium azide and 50% glycerol pH 7.3.
Aliquoting is unnecessary for -20°C storage

*** 20ul sizes contain 0.1% BSA

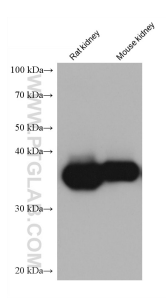
For technical support and original validation data for this product please contact:
T: 1 (888) 4PTGLAB (1-888-478-4522) (toll free in USA), or 1(312) 455-8498 (outside USA)
E: proteintech@ptglab.com
W: ptglab.com

This product is exclusively available under Proteintech Group brand and is not available to purchase from any other manufacturer.

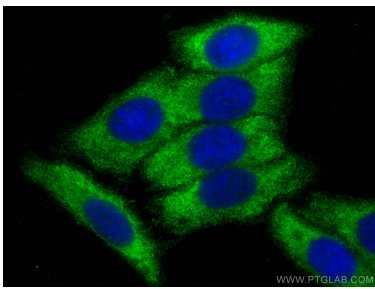
Selected Validation Data



Various lysates were subjected to SDS PAGE followed by western blot with 68396-1-Ig (ALDOB antibody) at dilution of 1:10000 incubated at room temperature for 1.5 hours.



Various lysates were subjected to SDS PAGE followed by western blot with 68396-1-Ig (ALDOB antibody) at dilution of 1:10000 incubated at room temperature for 1.5 hours.



Immunofluorescent analysis of (-20°C Ethanol) fixed HepG2 cells using ALDOB antibody (68396-1-Ig, Clone: 3D2E4) at dilution of 1:800 and CoraLite®488-Conjugated Goat Anti-Mouse IgG(H+L).