

For Research Use Only

METTL6 Monoclonal antibody

Catalog Number: 68400-1-Ig



Basic Information

Catalog Number: 68400-1-Ig	GenBank Accession Number: BC022400	Purification Method: Protein A purification
Size: 150ul , Concentration: 1000 ug/ml by Nanodrop;	GeneID (NCBI): 131965	CloneNo.: 1C7D4
Source: Mouse	UNIPROT ID: Q8TCB7	Recommended Dilutions: WB 1:5000-1:50000 IHC 1:1000-1:4000
Isotype: IgG2b	Full Name: methyltransferase like 6	
Immunogen Catalog Number: AG9714	Calculated MW: 255 aa, 30 kDa	
	Observed MW: 30-32 kDa	

Applications

Tested Applications:
WB, IHC, ELISA

Species Specificity:
Human

Note-IHC: suggested antigen retrieval with **TE buffer pH 9.0; (*) Alternatively, antigen retrieval may be performed with citrate buffer pH 6.0**

Positive Controls:

WB : HeLa cells, HepG2 cells, LNCaP cells, HEK-293 cells, Jurkat cells, K-562 cells

IHC : human breast cancer tissue, human lung cancer tissue

Background Information

Methyltransferase-like protein 6 (METTL6) belongs to the METL family. METTL6 is as a crucial regulator of tumor cell growth, and METTL6 is a bona fide transfer RNA (tRNA) methyltransferase, catalyzing the formation of 3-methylcytidine at C32 of specific serine tRNA isoacceptors (PMID:32923617). METTL6 is a member of the RNA methyltransferase family that has been identified in many cancers. The mRNA expression levels of METTL6 were significantly upregulated in HCC tumor tissues compared to that in adjacent nontumor tissues. CRISPR/Cas9 mediated knockout of METTL6 in hepatocellular carcinoma cell lines remarkably inhibited colony formation, cell proliferation, cell migration, cell invasion and cell attachment ability (PMID:34913069).

Storage

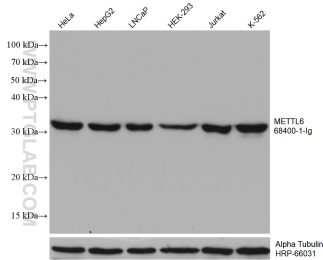
Storage:
Store at -20°C. Stable for one year after shipment.
Storage Buffer:
PBS with 0.02% sodium azide and 50% glycerol pH 7.3.
Aliquoting is unnecessary for -20°C storage

*** 20ul sizes contain 0.1% BSA

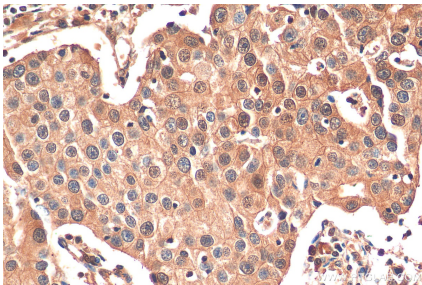
For technical support and original validation data for this product please contact:
T: 1 (888) 4PTGLAB (1-888-478-4522) (toll free in USA), or 1(312) 455-8498 (outside USA)
E: proteintech@ptglab.com
W: ptglab.com

This product is exclusively available under Proteintech Group brand and is not available to purchase from any other manufacturer.

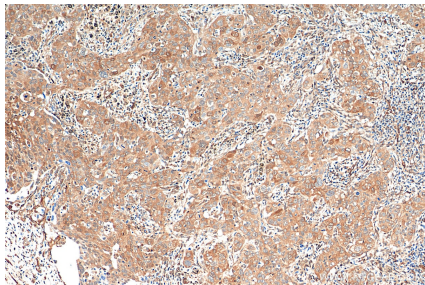
Selected Validation Data



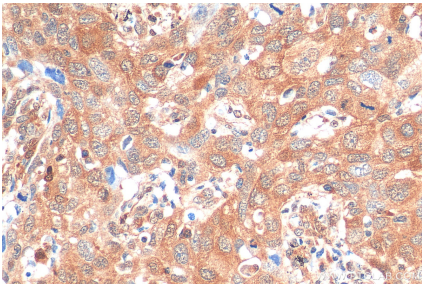
Various lysates were subjected to SDS PAGE followed by western blot with 68400-1-Ig (METTL6 antibody) at dilution of 1:20000 incubated at room temperature for 1.5 hours. The membrane was stripped and reblotted with HRP-conjugated Alpha Tubulin Monoclonal antibody (HRP-66031) as loading control.



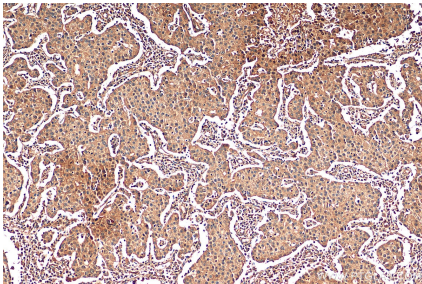
Immunohistochemical analysis of paraffin-embedded human breast cancer tissue slide using 68400-1-Ig (METTL6 antibody) at dilution of 1:2000 (under 40x lens). Heat mediated antigen retrieval with Tris-EDTA buffer (pH 9.0).



Immunohistochemical analysis of paraffin-embedded human lung cancer tissue slide using 68400-1-Ig (METTL6 antibody) at dilution of 1:2000 (under 10x lens). Heat mediated antigen retrieval with Tris-EDTA buffer (pH 9.0).



Immunohistochemical analysis of paraffin-embedded human lung cancer tissue slide using 68400-1-Ig (METTL6 antibody) at dilution of 1:2000 (under 40x lens). Heat mediated antigen retrieval with Tris-EDTA buffer (pH 9.0).



Immunohistochemical analysis of paraffin-embedded human breast cancer tissue slide using 68400-1-Ig (METTL6 antibody) at dilution of 1:2000 (under 10x lens). Heat mediated antigen retrieval with Tris-EDTA buffer (pH 9.0).