

For Research Use Only

AMOTL2 Monoclonal antibody

Catalog Number: 68401-1-Ig



Basic Information

Catalog Number: 68401-1-Ig	GenBank Accession Number: BC011454	Purification Method: Protein G purification
Size: 150ul , Concentration: 1000 µg/ml by Nanodrop;	GeneID (NCBI): 51421	CloneNo.: 2C4A4
Source: Mouse	Full Name: angiomin like 2	Recommended Dilutions: WB 1:2000-1:10000
Isotype: IgG1	Calculated MW: 779 aa, 86 kDa	
Immunogen Catalog Number: AG19971	Observed MW: 100 kDa	

Applications

Tested Applications: WB, ELISA	Positive Controls: WB : A549 cells, DU 145 cells, Saos-2 cells, NCI-H1299 cells, MDA-MB-468 cells, SK-BR-3 cells
Species Specificity: Human	

Background Information

Angiomin-like 2 (AMOTL2) is a member of the motin family of angiostatin-binding proteins. The motin family, also known as AMOTs, consists of three members: AMOT, AMOT-like 1 (AMOTL1) and AMOTL2. Members of the motin family are a type of adaptor proteins mainly distributed in the cytomembrane, cytoplasm or nucleus, and have a higher expression in the endothelial cells of capillaries and in larger vessels of the placenta. Human AmotL2 encodes two isoforms of a molecular mass of 100 kDa and 60 kDa.(PMID: 34036399,PMID: 25080976)

Storage

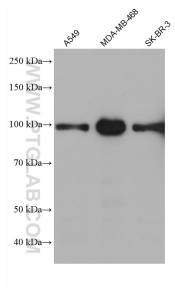
Storage:
Store at -20°C. Stable for one year after shipment.
Storage Buffer:
PBS with 0.02% sodium azide and 50% glycerol pH 7.3.
Aliquoting is unnecessary for -20°C storage

*** 20ul sizes contain 0.1% BSA

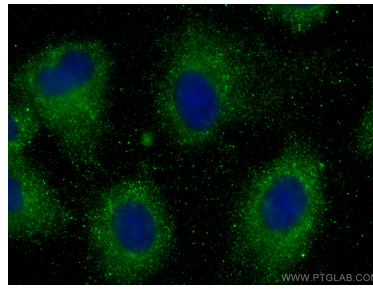
For technical support and original validation data for this product please contact:
T: 1 (888) 4PTGLAB (1-888-478-4522) (toll free in USA), or 1(312) 455-8498 (outside USA)
E: proteintech@ptglab.com
W: ptglab.com

This product is exclusively available under Proteintech Group brand and is not available to purchase from any other manufacturer.

Selected Validation Data



Various lysates were subjected to SDS PAGE followed by western blot with 68401-1-Ig (AMOTL2 antibody) at dilution of 1:5000 incubated at room temperature for 1.5 hours.



Immunofluorescent analysis of (-20°C Methanol) fixed A549 cells using AMOTL2 antibody (68401-1-Ig, Clone: 2C4A4) at dilution of 1:1000 and CoraLite®488-Conjugated AffiniPure Goat Anti-Mouse IgG(H+L).