

For Research Use Only

# IGFBP3 Monoclonal antibody

Catalog Number: 68402-1-Ig



## Basic Information

<b>Catalog Number:</b> 68402-1-Ig	<b>GenBank Accession Number:</b> BC000013	<b>Purification Method:</b> Caprylic acid/ammonium sulfate precipitation
<b>Size:</b> 150ul , Concentration: 500 µg/ml by Bradford method using BSA as the standard;	<b>GeneID (NCBI):</b> 3486	<b>CloneNo.:</b> 1A12A11
<b>Source:</b> Mouse	<b>Full Name:</b> insulin-like growth factor binding protein 3	<b>Recommended Dilutions:</b> WB 1:2000-1:10000 IHC 1:250-1:1000
<b>Isotype:</b> IgM	<b>Calculated MW:</b> 32 kDa	
<b>Immunogen Catalog Number:</b> AG20351	<b>Observed MW:</b> 39-45 kDa	

## Applications

### Tested Applications:

IHC, WB, ELISA

### Species Specificity:

Human

**Note-IHC: suggested antigen retrieval with TE buffer pH 9.0; (\*) Alternatively, antigen retrieval may be performed with citrate buffer pH 6.0**

### Positive Controls:

WB : A549 cells, human placenta tissue, Caco-2 cells

IHC : human placenta tissue,

## Background Information

Insulin-like growth factor binding protein-3 (IGFBP-3) contains a 27 amino acid putative signal sequence followed by a mature protein of 264 amino acids with 18 cysteine residues clustered near the N- and C-terminus. Accordingly, expression of the cloned IGFBP-3 cDNA in mammalian tissue culture cells results in secretion of the protein into the culture medium. IGFBP-3 shares high homology (33% amino acid identity) including conservation of all 18 cysteine residues with a smaller human IGF-binding protein (BP-28) identified in amniotic fluid. IGFBP-3 has one or more glycosylation sites with a protein core of ~30 kDa. Western blots revealed that the 39-45 kDa IGFBP-3 fragment is a glycoprotein. (PMID: 23403918, PMID: 24926947, PMID: 19887447)

## Storage

### Storage:

Store at -20°C. Stable for one year after shipment.

### Storage Buffer:

PBS with 0.02% sodium azide and 50% glycerol pH 7.3.

Aliquoting is unnecessary for -20°C storage

\*\*\* 20ul sizes contain 0.1% BSA

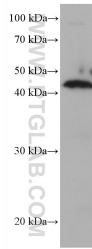
For technical support and original validation data for this product please contact:

T: 1 (888) 4PTGLAB (1-888-478-4522) (toll free in USA), or 1(312) 455-8498 (outside USA)

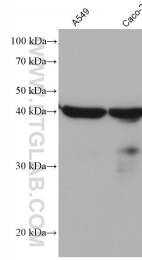
E: proteintech@ptglab.com  
W: ptglab.com

This product is exclusively available under Proteintech Group brand and is not available to purchase from any other manufacturer.

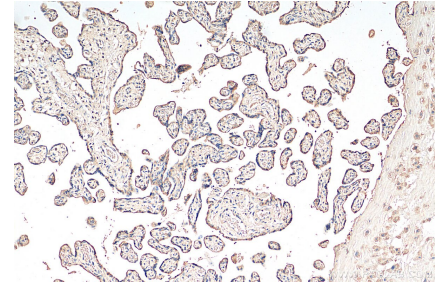
## Selected Validation Data



human placenta tissue were subjected to SDS PAGE followed by western blot with 68402-1-Ig (IGFBP3 antibody) at dilution of 1:5000 incubated at room temperature for 1.5 hours.



Various lysates were subjected to SDS PAGE followed by western blot with 68402-1-Ig (IGFBP3 antibody) at dilution of 1:5000 incubated at room temperature for 1.5 hours.



Immunohistochemical analysis of paraffin-embedded human placenta tissue slide using 68402-1-Ig (IGFBP3 antibody) at dilution of 1:500 (under 10x lens). Heat mediated antigen retrieval with Tris-EDTA buffer (pH 9.0).