

For Research Use Only

HIP1R Monoclonal antibody

Catalog Number: 68403-1-Ig



Basic Information

Catalog Number:

68403-1-Ig

Size:

150ul , Concentration: 1000 ug/ml by Nanodrop;

Source:

Mouse

Isotype:

IgG2a

Immunogen Catalog Number:

AG10657

GenBank Accession Number:

BC067085

GeneID (NCBI):

9026

UNIPROT ID:

O75146

Full Name:

huntingtin interacting protein 1 related

Calculated MW:

615 aa, 70 kDa, 120 kDa

Observed MW:

120 kDa

Purification Method:

Protein A purification

CloneNo.:

2F10D10

Recommended Dilutions:

WB 1:5000-1:50000

IF/ICC 1:1000-1:4000

Applications

Tested Applications:

WB, IF/ICC, ELISA

Species Specificity:

Human, mouse, rat

Positive Controls:

WB : A549 cells, 4T1 cells, U2OS cells, LNCaP cells, HEK-293 cells, Jurkat cells, K-562 cells, HSC-T6 cells, NIH/3T3 cells

IF/ICC : HeLa cells,

Storage

Storage:

Store at -20°C. Stable for one year after shipment.

Storage Buffer:

PBS with 0.02% sodium azide and 50% glycerol pH 7.3.

Aliquoting is unnecessary for -20°C storage

*** 20ul sizes contain 0.1% BSA

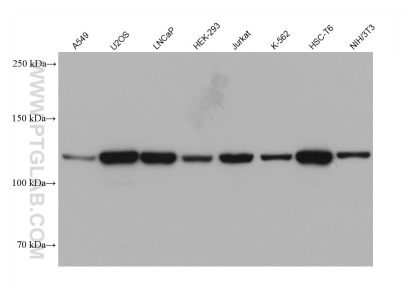
For technical support and original validation data for this product please contact:

T: 1 (888) 4PTGLAB (1-888-478-4522) (toll free in USA), or 1(312) 455-8498 (outside USA)

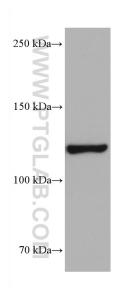
E: proteintech@ptglab.com
W: ptglab.com

This product is exclusively available under Proteintech Group brand and is not available to purchase from any other manufacturer.

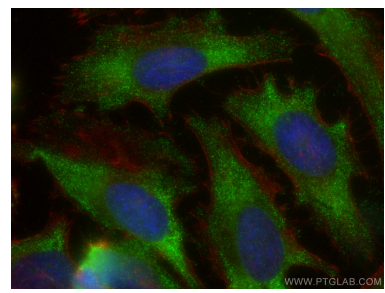
Selected Validation Data



Various lysates were subjected to SDS PAGE followed by western blot with 68403-1-Ig (HIP1R antibody) at dilution of 1:10000 incubated at room temperature for 1.5 hours.



4T1 cells were subjected to SDS PAGE followed by western blot with 68403-1-Ig (HIP1R antibody) at dilution of 1:10000 incubated at room temperature for 1.5 hours.



Immunofluorescent analysis of (-20°C Ethanol) fixed HeLa cells using HIP1R antibody (68403-1-Ig, Clone: 2F10D10) at dilution of 1:2000 and CoraLite®488-Conjugated Goat Anti-Mouse IgG(H+L), CL594-Phalloidin (red).