

For Research Use Only

CHMP7 Monoclonal antibody, PBS Only



Catalog Number: 68406-1-PBS

Basic Information

Catalog Number:

68406-1-PBS

Size:

100ug, Concentration: 1 mg/ml by Nanodrop;

Source:

Mouse

Isotype:

IgG1

Immunogen Catalog Number:

AG9641

GenBank Accession Number:

BC019110

GeneID (NCBI):

91782

UNIPROT ID:

Q8WUX9

Full Name:

CHMP family, member 7

Calculated MW:

453 aa, 51 kDa

Observed MW:

51-55 kDa

Purification Method:

Protein A purification

CloneNo.:

2F8F6

Applications

Tested Applications:

WB, IF, IHC, ELISA

Species Specificity:

Human, rat

Storage

Storage:

Store at -80°C.

Storage Buffer:

PBS only

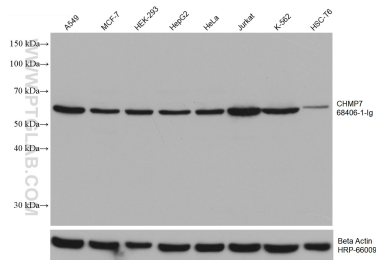
For technical support and original validation data for this product please contact:

T: 1 (888) 4PTGLAB (1-888-478-4522) (toll free in USA), or 1(312) 455-8498 (outside USA)

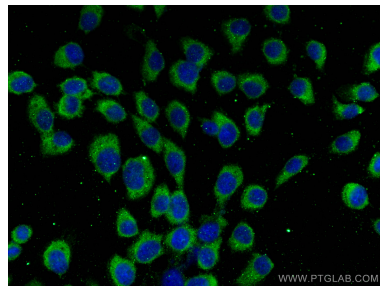
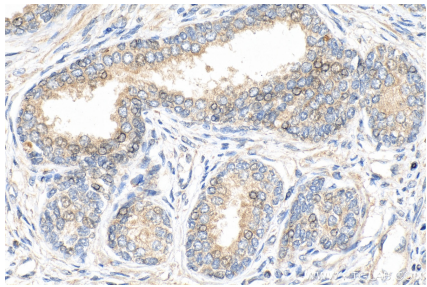
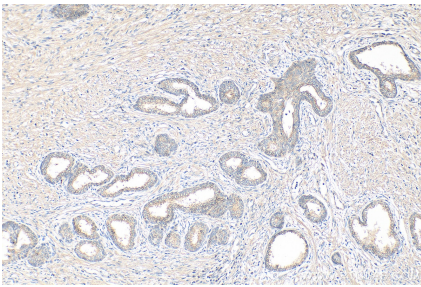
E: proteintech@ptglab.com
W: ptglab.com

This product is exclusively available under Proteintech Group brand and is not available to purchase from any other manufacturer.

Selected Validation Data



Various lysates were subjected to SDS PAGE followed by western blot with 68406-1-Ig (CHMP7 antibody) at dilution of 1:10000 incubated at room temperature for 1.5 hours. The membrane was stripped and reblotted with HRP-conjugated Beta Actin Monoclonal antibody (HRP-66009) as loading control. This data was developed using the same antibody clone with 68406-1-PBS in a different storage buffer formulation.



Immunofluorescent analysis of (-20°C Methanol) fixed A431 cells using CHMP7 antibody (68406-1-Ig, Clone: 2F8F6) at dilution of 1:800 and CoraLite®488-Conjugated AffiniPure Goat Anti-Mouse IgG(H+L). This data was developed using the same antibody clone with 68406-1-PBS in a different storage buffer formulation.