

For Research Use Only

# SYAP1 Monoclonal antibody

Catalog Number: 68410-1-Ig



## Basic Information

<b>Catalog Number:</b> 68410-1-Ig	<b>GenBank Accession Number:</b> BC014657	<b>Purification Method:</b> Protein A purification
<b>Size:</b> 150ul , Concentration: 1000 ug/ml by Nanodrop;	<b>GeneID (NCBI):</b> 94056	<b>CloneNo.:</b> 2E12A5
<b>Source:</b> Mouse	<b>UNIPROT ID:</b> Q96A49	<b>Recommended Dilutions:</b> WB: 1:5000-1:50000 IP: 0.5-4.0 ug for 1.0-3.0 mg of total protein lysate IF/ICC: 1:400-1:1600
<b>Isotype:</b> IgG2b	<b>Full Name:</b> synapse associated protein 1, SAP47 homolog (Drosophila)	
<b>Immunogen Catalog Number:</b> AG9626	<b>Calculated MW:</b> 352 aa, 40 kDa <b>Observed MW:</b> 50-55 kDa	

## Applications

<b>Tested Applications:</b> WB, IF/ICC, IP, ELISA	<b>Positive Controls:</b>
<b>Species Specificity:</b> human, mouse, rat	<b>WB :</b> U2OS cells, A549 cells, LNCaP cells, HeLa cells, Jurkat cells, K-562 cells, HSC-T6 cells, NIH/3T3 cells <b>IP :</b> L02 cells, <b>IF/ICC :</b> HepG2 cells, HeLa cells

## Background Information

SYAP1(Synapse-associated protein 1) is a human homologue of the Drosophila SAP47 (synapse associated protein), which is recognized by a monoclonal antibody that selectively stain synaptic terminals. This protein is a 352 amino acid protein that is ubiquitously expressed in adult tissues. SYAP1 contains one BSD domain which is an approximately 60 amino acid long protein domain named after the BTF2-like transcription factors, Synapse-associated proteins and DOS2-like proteins in which it is found.

## Storage

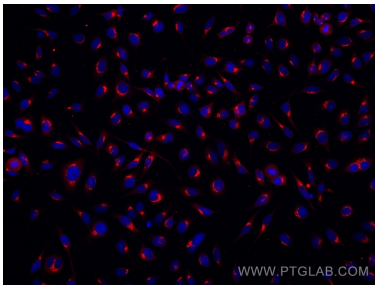
**Storage:**  
Store at -20°C. Stable for one year after shipment.  
**Storage Buffer:**  
PBS with 0.02% sodium azide and 50% glycerol, pH7.3  
**Aliquoting is unnecessary for -20°C storage**

\*\*\* 20ul sizes contain 0.1%BSA

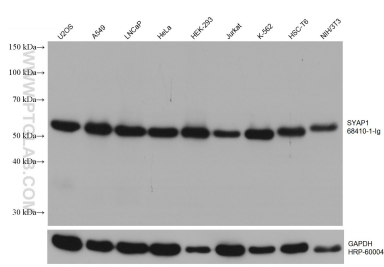
For technical support and original validation data for this product please contact:  
T: 1 (888) 4PTGLAB (1-888-478-4522) (toll free in USA), or 1(312) 455-8498 (outside USA)  
E: [proteintech@ptglab.com](mailto:proteintech@ptglab.com)  
W: [ptglab.com](http://ptglab.com)

This product is exclusively available under Proteintech Group brand and is not available to purchase from any other manufacturer.

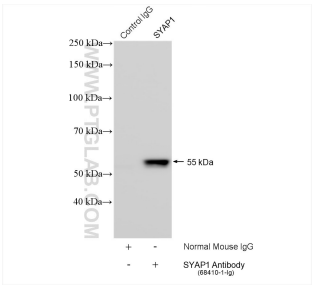
Selected Validation Data



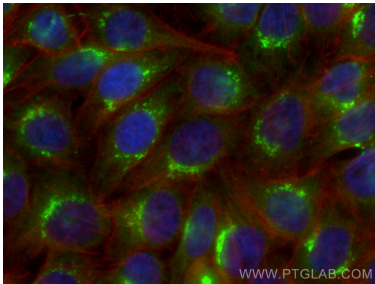
Immunofluorescent analysis of (4% PFA) fixed HeLa cells using SYAP1 antibody (68410-1-Ig, Clone: 2E12A5 ) at dilution of 1:1000 and Multi-rAb CoraLite® Plus 594-Goat Anti-Mouse Recombinant Secondary Antibody (H+L) (Cat.NO. RGAM004).



Various lysates were subjected to SDS PAGE followed by western blot with 68410-1-Ig (SYAP1 antibody) at dilution of 1:10000 incubated at room temperature for 1.5 hours. The membrane was stripped and reblotted with HRP-conjugated GAPDH Monoclonal antibody (HRP-60004) as loading control.



IP result of anti-SYAP1 (IP:68410-1-Ig, 4ug; Detection:68410-1-Ig 1:2000) with L02 cells lysate 3080 ug.



Immunofluorescent analysis of (4% PFA) fixed HepG2 cells using SYAP1 antibody (68410-1-Ig, Clone: 2E12A5 ) at dilution of 1:800 and CoraLite®488-Conjugated AffiniPure Goat Anti-Mouse IgG(H+L), CL594-Phalloidin (red).