

For Research Use Only

SYAP1 Monoclonal antibody

Catalog Number: 68410-1-Ig



Basic Information

Catalog Number: 68410-1-Ig	GenBank Accession Number: BC014657	Purification Method: Protein A purification
Size: 150ul , Concentration: 1000 ug/ml by Nanodrop;	GeneID (NCBI): 94056	CloneNo.: 2E12A5
Source: Mouse	UNIPROT ID: Q96A49	Recommended Dilutions: WB 1:5000-1:50000 IP 0.5-4.0 ug for 1.0-3.0 mg of total protein lysate IF/ICC 1:400-1:1600
Isotype: IgG2b	Full Name: synapse associated protein 1, SAP47 homolog (Drosophila)	
Immunogen Catalog Number: AG9626	Calculated MW: 352 aa, 40 kDa	
	Observed MW: 50-55 kDa	

Applications

Tested Applications: WB, IF/ICC, IP, ELISA	Positive Controls:
Species Specificity: Human, mouse, rat	WB : U2OS cells, A549 cells, LNCaP cells, HeLa cells, Jurkat cells, K-562 cells, HSC-T6 cells, NIH/3T3 cells IP : L02 cells, IF/ICC : HepG2 cells,

Background Information

SYAP1(Synapse-associated protein 1) is a human homologue of the Drosophila SAP47 (synapse associated protein), which is recognized by a monoclonal antibody that selectively stain synaptic terminals. This protein is a 352 amino acid protein that is ubiquitously expressed in adult tissues. SYAP1 contains one BSD domain which is an approximately 60 amino acid long protein domain named after the BTF2-like transcription factors, Synapse-associated proteins and DOS2-like proteins in which it is found.

Storage

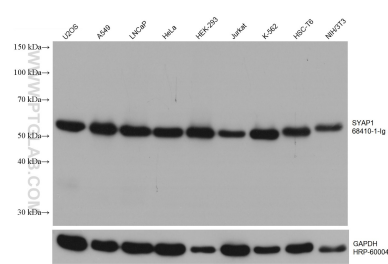
Storage:
Store at -20°C. Stable for one year after shipment.
Storage Buffer:
PBS with 0.02% sodium azide and 50% glycerol pH 7.3.
Aliquoting is unnecessary for -20°C storage

*** 20ul sizes contain 0.1% BSA

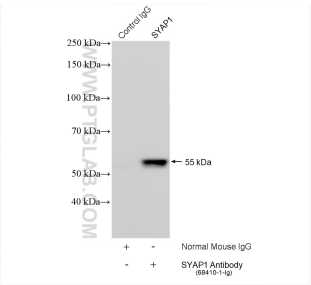
For technical support and original validation data for this product please contact:
T: 1 (888) 4PTGLAB (1-888-478-4522) (toll free in USA), or 1(312) 455-8498 (outside USA)
E: proteintech@ptglab.com
W: ptglab.com

This product is exclusively available under Proteintech Group brand and is not available to purchase from any other manufacturer.

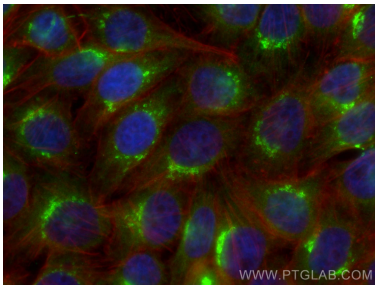
Selected Validation Data



Various lysates were subjected to SDS PAGE followed by western blot with 68410-1-Ig (SYAP1 antibody) at dilution of 1:10000 incubated at room temperature for 1.5 hours. The membrane was stripped and reblotted with HRP-conjugated GAPDH Monoclonal antibody (HRP-60004) as loading control.



IP result of anti-SYAP1 (IP:68410-1-Ig, 4ug; Detection:68410-1-Ig 1:2000) with L02 cells lysate 3080 ug.



Immunofluorescent analysis of (4% PFA) fixed HepG2 cells using SYAP1 antibody (68410-1-Ig, Clone: 2E12A5) at dilution of 1:800 and CoraLite®488-Conjugated Goat Anti-Mouse IgG(H+L), CL594-Phalloidin (red).