

For Research Use Only

TAP1 Monoclonal antibody

Catalog Number: 68412-1-Ig **1 Publications**



Basic Information

| | | |
|--|--|---|
| Catalog Number: 68412-1-Ig | GenBank Accession Number: BC014081 | Purification Method: Protein A purification |
| Size: 150ul , Concentration: 1000 ug/ml by Nanodrop; | GeneID (NCBI): 6890 | CloneNo.: 1B8A7 |
| Source: Mouse | UNIPROT ID: Q03518 | Recommended Dilutions: WB 1:5000-1:50000 IHC 1:500-1:2000 IF/ICC 1:500-1:2000 |
| Isotype: IgG2b | Full Name: transporter 1, ATP-binding cassette, sub-family B (MDR/TAP) | |
| Immunogen Catalog Number: AG21303 | Calculated MW: 81 kDa | |
| | Observed MW: 70 kDa | |

Applications

| | |
|--|---|
| Tested Applications: WB, IHC, IF/ICC, ELISA | Positive Controls: WB : A2780 cells, SW 1990 cells, HeLa cells, MDA-MB-231 cells, HaCaT cells, THP-1 cells, Daudi cells, Ramos cells, Raji cells IHC : human pancreas cancer tissue, IF/ICC : HepG2 cells, |
| Cited Applications: WB | |
| Species Specificity: Human | |
| Cited Species: human | |
| Note-IHC: suggested antigen retrieval with TE buffer pH 9.0; (*) Alternatively, antigen retrieval may be performed with citrate buffer pH 6.0 | |

Background Information

TAP1, also known as ABCB2, PSF1 or RING4, is a member of the ATP-binding cassette (ABC) family of transmembrane transporters and is an essential component of the major histocompatibility complex (MHC) class I antigen-presenting pathway. TAP is involved in the transport of antigens from the cytoplasm to the endoplasmic reticulum for association with MHC class I molecules. It also acts as a molecular scaffold for the final stage of MHC class I folding. Defects in TAP1 are a cause of bare lymphocyte syndrome type 1 (BLS1). Western blot analysis using this antibody detected a major band around 70 kDa.

Notable Publications

| Author | Pubmed ID | Journal | Application |
|----------|-----------|-------------------|-------------|
| Jiaqi Wu | 39024058 | J Agric Food Chem | WB |

Storage

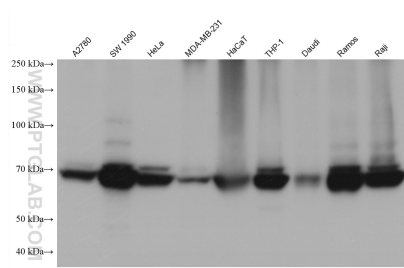
Storage:
Store at -20°C. Stable for one year after shipment.
Storage Buffer:
PBS with 0.02% sodium azide and 50% glycerol pH 7.3.
Aliquoting is unnecessary for -20°C storage

*** 20ul sizes contain 0.1% BSA

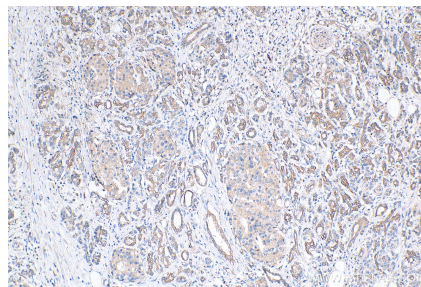
For technical support and original validation data for this product please contact:
T: 1 (888) 4PTGLAB (1-888-478-4522) (toll free in USA), or 1(312) 455-8498 (outside USA)
E: proteintech@ptglab.com
W: ptglab.com

This product is exclusively available under Proteintech Group brand and is not available to purchase from any other manufacturer.

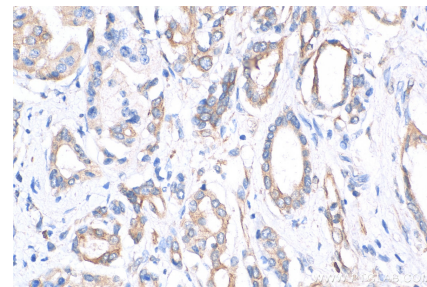
Selected Validation Data



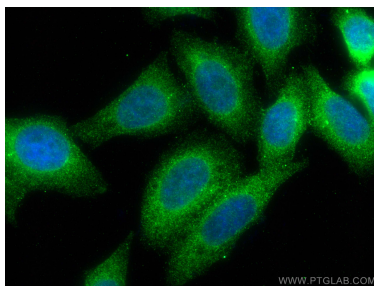
Various lysates were subjected to SDS PAGE followed by western blot with 68412-1-Ig (TAP1 antibody) at dilution of 1:10000 incubated at room temperature for 1.5 hours.



Immunohistochemical analysis of paraffin-embedded human pancreas cancer tissue slide using 68412-1-Ig (TAP1 antibody) at dilution of 1:1000 (under 10x lens). Heat mediated antigen retrieval with Tris-EDTA buffer (pH 9.0).



Immunohistochemical analysis of paraffin-embedded human pancreas cancer tissue slide using 68412-1-Ig (TAP1 antibody) at dilution of 1:1000 (under 40x lens). Heat mediated antigen retrieval with Tris-EDTA buffer (pH 9.0).



Immunofluorescent analysis of (4% PFA) fixed HepG2 cells using TAP1 antibody (68412-1-Ig, Clone: 1B8A7) at dilution of 1:1000 and CoraLite®488-Conjugated Goat Anti-Mouse IgG(H+L).