

For Research Use Only

PMS1 Monoclonal antibody

Catalog Number: 68413-1-Ig



Basic Information

Catalog Number: 68413-1-Ig	GenBank Accession Number: BC096331	Purification Method: Protein A purification
Size: 150ul , Concentration: 1000 µg/ml by Nanodrop;	GeneID (NCBI): 5378	CloneNo.: 1A6G3
Source: Mouse	Full Name: PMS1 postmeiotic segregation increased 1 (S. cerevisiae)	Recommended Dilutions: WB 1:5000-1:50000 IF 1:500-1:2000
Isotype: IgG2a	Observed MW: 106 kDa	
Immunogen Catalog Number: AG28127		

Applications

Tested Applications:

IF, WB, ELISA

Species Specificity:

Human

Positive Controls:

WB : Caco-2 cells, HeLa cells, HepG2 cells, LNCaP cells, HEK-293 cells, MOLT-4 cells, K-562 cells, HL-60 cells, Jurkat cells

IF : Caco-2 cells,

Background Information

PMS1 Homolog 1 is a member of the DNA mismatch repair enzymes (MMREs) which is to eliminate the mismatch of insertions and deletions as a consequence of DNA polymerase errors at DNA synthesis in eukaryotes. PMS1 and MLH1 could form a heterodimer MutL β that belongs to MMREs (PMID:25619773). In the MMR system, the MutS complex recognizes the DNA mispairs firstly, and then the Mlh1-Pms1 and other associated proteins such as PCNA, RFC, Exo1 were recruited, inducing Exonuclease 1 (Exo1)-dependent and -independent MMR pathways (PMID:24981171). Mutations in this gene cause hereditary nonpolyposis colorectal cancer (HNPCC), which is also known as Lynch syndrome. It was reported that PMS1 is a widely expressed protein and located in the nucleus. Alternative splicing allows for 4 isoforms of PMS1 protein.

Storage

Storage:

Store at -20°C. Stable for one year after shipment.

Storage Buffer:

PBS with 0.02% sodium azide and 50% glycerol pH 7.3.

Aliquoting is unnecessary for -20°C storage

*** 20ul sizes contain 0.1% BSA

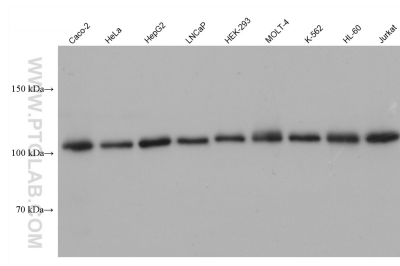
For technical support and original validation data for this product please contact:

T: 1 (888) 4PTGLAB (1-888-478-4522) (toll free in USA), or 1(312) 455-8498 (outside USA)

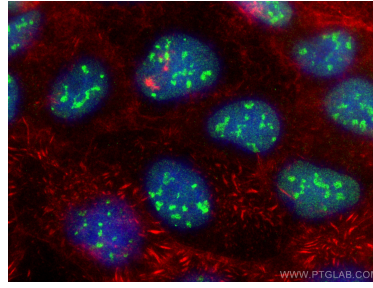
E: proteintech@ptglab.com
W: ptglab.com

This product is exclusively available under Proteintech Group brand and is not available to purchase from any other manufacturer.

Selected Validation Data



Various lysates were subjected to SDS PAGE followed by western blot with 68413-1-Ig (PMS1 antibody) at dilution of 1:20000 incubated at room temperature for 1.5 hours.



Immunofluorescent analysis of (-20°C Ethanol) fixed Caco-2 cells using PMS1 antibody (68413-1-Ig, Clone: 1A6G3) at dilution of 1:1000 and CoraLite®488-Conjugated AffiniPure Goat Anti-Mouse IgG(H+L), CL594-Phalloidin (red).