

For Research Use Only

HSDL2 Monoclonal antibody

Catalog Number: 68414-1-Ig



Basic Information

Catalog Number: 68414-1-Ig	GenBank Accession Number: BC004331	Purification Method: Protein A purification
Size: 150ul , Concentration: 1000 ug/ml by Nanodrop;	GeneID (NCBI): 84263	CloneNo.: 3D11G1
Source: Mouse	UNIPROT ID: Q6YN16	Recommended Dilutions: WB 1:5000-1:50000 IF/ICC 1:400-1:1600
Isotype: IgG2b	Full Name: hydroxysteroid dehydrogenase like 2	
Immunogen Catalog Number: AG8314	Calculated MW: 45 kDa	
	Observed MW: 45 kDa	

Applications

Tested Applications: WB, IF/ICC, ELISA	Positive Controls:
Species Specificity: Human, pig, rabbit	WB : HepG2 cells, HeLa cells, LNCaP cells, HEK-293 cells, Jurkat cells, pig heart tissue, rabbit heart tissue
	IF/ICC : HeLa cells,

Background Information

Human hydroxysteroid dehydrogenase-like 2 (HSDL2) is a characterized SDR gene that not only catalyses the oxidation and reduction of multiple substrates but also regulates different metabolic and signalling pathways. Accumulating evidences suggest that HSDL2 play an important role in cancer progression. HSDL2 has promoting effects on tumor progression in papillary thyroid cancer, bladder cancer, ovarian cancer, and glioma, but has suppressing effects in cholangiocarcinoma . (PMID: 31372054, PMID: 32211805)

Storage

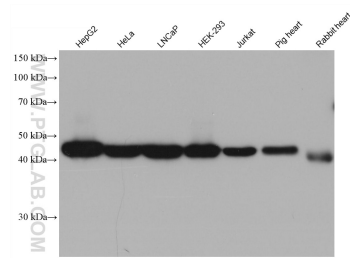
Storage:
Store at -20°C. Stable for one year after shipment.
Storage Buffer:
PBS with 0.02% sodium azide and 50% glycerol pH 7.3.
Aliquoting is unnecessary for -20°C storage

*** 20ul sizes contain 0.1% BSA

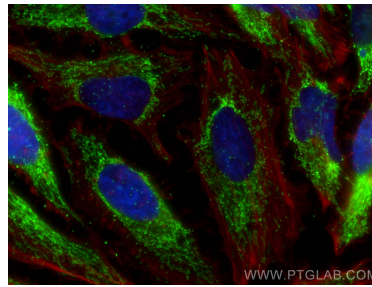
For technical support and original validation data for this product please contact:
T: 1 (888) 4PTGLAB (1-888-478-4522) (toll free in USA), or 1(312) 455-8498 (outside USA)
E: proteintech@ptglab.com
W: ptglab.com

This product is exclusively available under Proteintech Group brand and is not available to purchase from any other manufacturer.

Selected Validation Data



Various lysates were subjected to SDS PAGE followed by western blot with 68414-1-Ig (HSDL2 antibody) at dilution of 1:20000 incubated at room temperature for 1.5 hours.



Immunofluorescent analysis of (4% PFA) fixed HeLa cells using HSDL2 antibody (68414-1-Ig, Clone: 3D11G1) at dilution of 1:800 and CoraLite®488-Conjugated Goat Anti-Mouse IgG(H+L), CL594-Phalloidin (red).