

For Research Use Only

MPI Monoclonal antibody

Catalog Number: 68417-1-Ig

Featured Product



Basic Information

Catalog Number:

68417-1-Ig

Size:

150ul, Concentration: 1000 ug/ml by Nanodrop;

Source:

Mouse

Isotype:

IgG1

Immunogen Catalog Number:

AG5475

GenBank Accession Number:

BC046357

GeneID (NCBI):

4351

UNIPROT ID:

P34949

Full Name:

mannose phosphate isomerase

Calculated MW:

47 kDa

Observed MW:

40-47 kDa

Purification Method:

Protein G purification

CloneNo.:

3B10A6

Recommended Dilutions:

WB 1:5000-1:50000

IP 0.5-4.0 ug for 1.0-3.0 mg of total protein lysate

IHC 1:250-1:1000

IF/ICC 1:500-1:2000

Applications

Tested Applications:

WB, IHC, IF/ICC, IP, ELISA

Species Specificity:

human, mouse, rat, pig

Note-IHC: suggested antigen retrieval with TE buffer pH 9.0; (*) Alternatively, antigen retrieval may be performed with citrate buffer pH 6.0

Positive Controls:

WB : MCF-7 cells, HEK-293 cells, rat brain tissue, A549 cells, LnCaP cells, Jurkat cells, K-562 cells, pig brain tissue

IP : Jurkat cells,

IHC : mouse brain tissue,

IF/ICC : NIH/3T3 cells,

Background Information

MPI (mannose-6-phosphate isomerase) is also named as PMI1 and belongs to the mannose-6-phosphate isomerase type 1 family. It is a zinc metalloenzyme that catalyzes the reversible isomerization of mannose-6-phosphate and fructose-6-phosphate. MPI plays a critical role in maintaining the supply of D-mannose derivatives, which are required for most glycosylation reactions. This protein has 2 isoforms produced by alternative splicing.

Storage

Storage:

Store at -20°C. Stable for one year after shipment.

Storage Buffer:

PBS with 0.02% sodium azide and 50% glycerol pH 7.3.

Aliquoting is unnecessary for -20°C storage

*** 20ul sizes contain 0.1% BSA

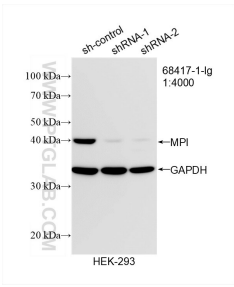
For technical support and original validation data for this product please contact:

T: 1 (888) 4PTGLAB (1-888-478-4522) (toll free in USA), or 1(312) 455-8498 (outside USA)

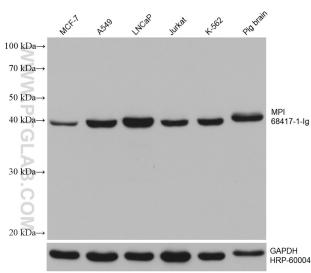
E: proteintech@ptglab.com
W: ptglab.com

This product is exclusively available under Proteintech Group brand and is not available to purchase from any other manufacturer.

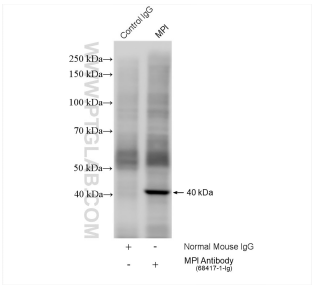
Selected Validation Data



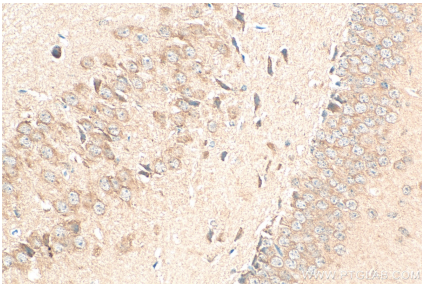
WB result of MPI antibody (68417-1-Ig; 1:4000; incubated at room temperature for 1.5 hours) with sh-Control and sh-MPI transfected HEK-293 cells.



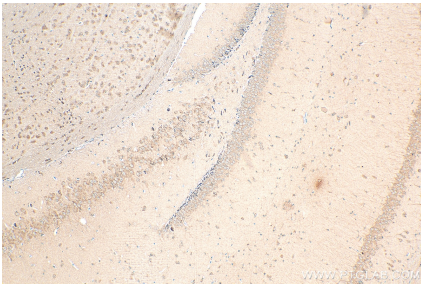
Various lysates were subjected to SDS PAGE followed by western blot with 68417-1-Ig (MPI antibody) at dilution of 1:10000 incubated at room temperature for 1.5 hours. The membrane was stripped and reblotted with HRP-conjugated GAPDH Monoclonal antibody (HRP-60004) as loading control.



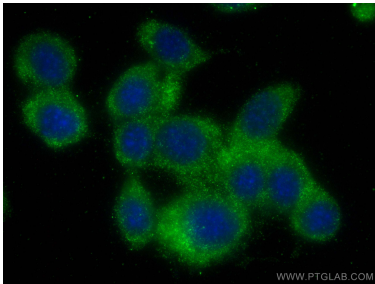
IP result of anti-MPI (IP: 68417-1-Ig, 4ug; Detection: 68417-1-Ig 1:2000) with Jurkat cells lysate 2280 ug.



Immunohistochemical analysis of paraffin-embedded mouse brain tissue slide using 68417-1-Ig (MPI antibody) at dilution of 1:500 (under 40x lens). Heat mediated antigen retrieval with Tris-EDTA buffer (pH 9.0).



Immunohistochemical analysis of paraffin-embedded mouse brain tissue slide using 68417-1-Ig (MPI antibody) at dilution of 1:500 (under 10x lens). Heat mediated antigen retrieval with Tris-EDTA buffer (pH 9.0).



Immunofluorescent analysis of (-20°C Methanol) fixed NIH/3T3 cells using MPI antibody (68417-1-Ig, Clone: 3B10A6) at dilution of 1:1000 and CoraLite®488-Conjugated AffiniPure Goat Anti-Mouse IgG(H+L).