

For Research Use Only

MPI Monoclonal antibody, PBS Only

Catalog Number: 68417-1-PBS

Featured Product



Basic Information

Catalog Number:

68417-1-PBS

Size:

100ug, Concentration: 1mg/ml by Nanodrop;

Source:

Mouse

Isotype:

IgG1

Immunogen Catalog Number:

AG5475

GenBank Accession Number:

BC046357

GeneID (NCBI):

4351

UNIPROT ID:

P34949

Full Name:

mannose phosphate isomerase

Calculated MW:

47 kDa

Observed MW:

40-47 kDa

Purification Method:

Protein G purification

CloneNo.:

3B10A6

Applications

Tested Applications:

WB, IHC, IF/ICC, IP, Indirect ELISA

Species Specificity:

human, mouse, rat, pig

Background Information

MPI (mannose-6-phosphate isomerase) is also named as PMI1 and belongs to the mannose-6-phosphate isomerase type 1 family. It is a zinc metalloenzyme that catalyzes the reversible isomerization of mannose-6-phosphate and fructose-6-phosphate. MPI plays a critical role in maintaining the supply of D-mannose derivatives, which are required for most glycosylation reactions. This protein has 2 isoforms produced by alternative splicing.

Storage

Storage:

Store at -80°C.

Storage Buffer:

PBS Only

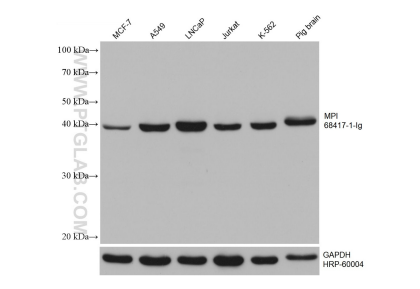
For technical support and original validation data for this product please contact:

T: 1 (888) 4PTGLAB (1-888-478-4522) (toll free in USA), or 1(312) 455-8498 (outside USA)

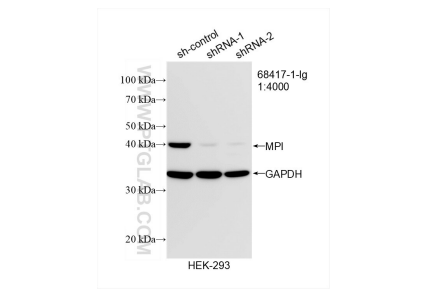
E: proteintech@ptglab.com
W: ptglab.com

This product is exclusively available under Proteintech Group brand and is not available to purchase from any other manufacturer.

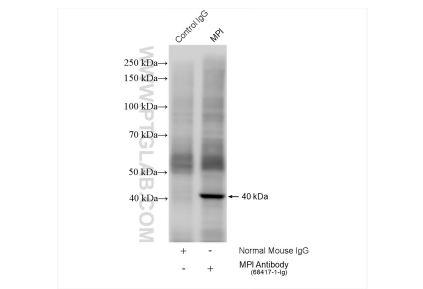
Selected Validation Data



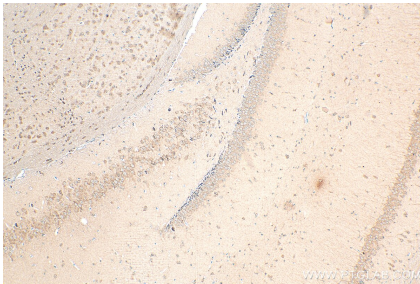
Various lysates were subjected to SDS PAGE followed by western blot with 68417-1-Ig (MPI antibody) at dilution of 1:10000 incubated at room temperature for 1.5 hours. The membrane was stripped and reblotted with HRP-conjugated GAPDH Monoclonal antibody (HRP-60004) as loading control. This data was developed using the same antibody clone with 68417-1-PBS in a different storage buffer formulation.



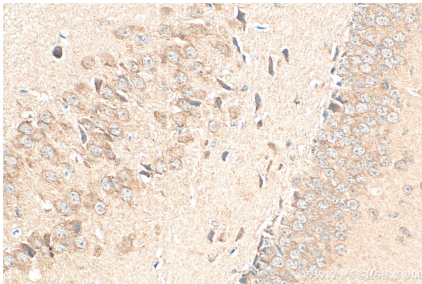
WB result of MPI antibody (68417-1-Ig; 1:4000; incubated at room temperature for 1.5 hours) with sh-Control and sh-MPI transfected HEK-293 cells. This data was developed using the same antibody clone with 68417-1-PBS in a different storage buffer formulation.



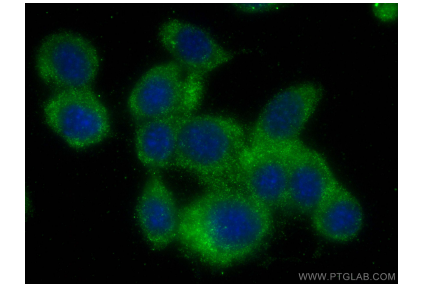
IP result of anti-MPI (IP:68417-1-Ig, 4ug; Detection:68417-1-Ig 1:2000) with Jurkat cells lysate 2280 ug. This data was developed using the same antibody clone with 68417-1-PBS in a different storage buffer formulation.



Immunohistochemical analysis of paraffin-embedded mouse brain tissue slide using MPI antibody (68417-1-Ig) at dilution of 1:500 (under 10x lens). Heat mediated antigen retrieval with Tris-EDTA buffer (pH 9.0). This data was developed using the same antibody clone with 68417-1-PBS in a different storage buffer formulation.



Immunohistochemical analysis of paraffin-embedded mouse brain tissue slide using MPI antibody (68417-1-Ig) at dilution of 1:500 (under 40x lens). Heat mediated antigen retrieval with Tris-EDTA buffer (pH 9.0). This data was developed using the same antibody clone with 68417-1-PBS in a different storage buffer formulation.



Immunofluorescent analysis of (-20°C Methanol) fixed NIH/3T3 cells using MPI antibody (68417-1-Ig, Clone: 3B10A6) at dilution of 1:1000 and CoraLite®488-Conjugated AffiniPure Goat Anti-Mouse IgG(H+L). This data was developed using the same antibody clone with 68417-1-PBS in a different storage buffer formulation.