

For Research Use Only

MRPL38 Monoclonal antibody

Catalog Number: 68418-1-Ig



Basic Information

Catalog Number:

68418-1-Ig

Size:

150ul, Concentration: 1000 ug/ml by Nanodrop;

Source:

Mouse

Isotype:

IgG1

Immunogen Catalog Number:

AG8927

GenBank Accession Number:

BC013311

GeneID (NCBI):

64978

UNIPROT ID:

Q96DV4

Full Name:

mitochondrial ribosomal protein L38

Calculated MW:

346 aa, 41 kDa

Observed MW:

37-45 kDa

Purification Method:

Protein G purification

CloneNo.:

1D11A1

Recommended Dilutions:

WB 1:2000-1:10000

IP 0.5-4.0 ug for 1.0-3.0 mg of total protein lysate

Applications

Tested Applications:

WB, IP, ELISA

Species Specificity:

Human, pig

Positive Controls:

WB : A549 cells, pig liver tissue, LNCaP cells, Jurkat cells, K-562 cells

IP : A549 cells,

Storage

Storage:

Store at -20°C. Stable for one year after shipment.

Storage Buffer:

PBS with 0.02% sodium azide and 50% glycerol pH 7.3.

Aliquoting is unnecessary for -20°C storage

*** 20ul sizes contain 0.1% BSA

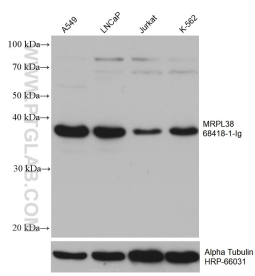
For technical support and original validation data for this product please contact:

T: 1 (888) 4PTGLAB (1-888-478-4522) (toll free in USA), or 1(312) 455-8498 (outside USA)

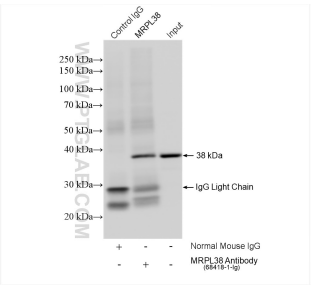
E: proteintech@ptglab.com
W: ptglab.com

This product is exclusively available under Proteintech Group brand and is not available to purchase from any other manufacturer.

Selected Validation Data



Various lysates were subjected to SDS PAGE followed by western blot with 68418-1-Ig (MRPL38 antibody) at dilution of 1:5000 incubated at room temperature for 1.5 hours. The membrane was stripped and reblotted with HRP-conjugated Alpha Tubulin Monoclonal antibody (HRP-66031) as loading control.



IP result of anti-MRPL38 (IP:68418-1-Ig, 4ug; Detection:68418-1-Ig 1:2000) with A549 cells lysate 920 ug.