

For Research Use Only

# MRPL38 Monoclonal antibody, PBS Only (Capture)

Catalog Number: 68418-1-PBS



## Basic Information

<b>Catalog Number:</b> 68418-1-PBS	<b>GenBank Accession Number:</b> BC013311	<b>Purification Method:</b> Protein G purification
<b>Size:</b> 100ug, Concentration: 1mg/ml by Nanodrop;	<b>GeneID (NCBI):</b> 64978	<b>CloneNo.:</b> 1D11A1
<b>Source:</b> Mouse	<b>UNIPROT ID:</b> Q96DV4	
<b>Isotype:</b> IgG1	<b>Full Name:</b> mitochondrial ribosomal protein L38	
<b>Immunogen Catalog Number:</b> AG8927	<b>Calculated MW:</b> 346 aa, 41 kDa	
	<b>Observed MW:</b> 37-45 kDa	

## Applications

**Tested Applications:**  
WB, IP, Cytometric bead array, Indirect ELISA

**Species Specificity:**  
human, pig

## Product Information

68418-1-PBS targets MRPL38 as part of a matched antibody pair:

MP50538-3: 68418-1-PBS capture and 68418-2-PBS detection (validated in Cytometric bead array)

MP50538-4: 68418-1-PBS capture and 68418-3-PBS detection (validated in Cytometric bead array)

Unconjugated mouse monoclonal antibody pair in PBS only (BSA and azide free) storage buffer at a concentration of 1 mg/mL, ready for conjugation.

This conjugation ready format makes antibodies ideal for use in many applications including: ELISAs, multiplex assays requiring matched pairs, mass cytometry, and multiplex imaging applications. Antibody use should be optimized by the end user for each application and assay.

## Storage

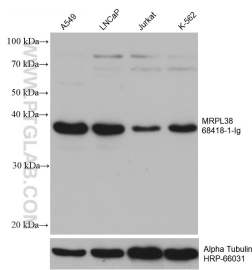
**Storage:**  
Store at -80°C.

**Storage Buffer:**  
PBS Only

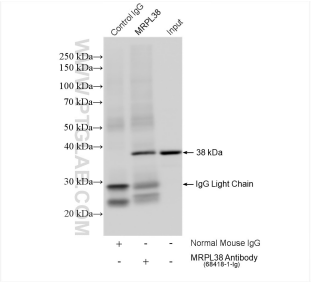
For technical support and original validation data for this product please contact:  
T: 1 (888) 4PTGLAB (1-888-478-4522) (toll free in USA), or 1(312) 455-8498 (outside USA)  
E: [proteintech@ptglab.com](mailto:proteintech@ptglab.com)  
W: [ptglab.com](http://ptglab.com)

This product is exclusively available under Proteintech Group brand and is not available to purchase from any other manufacturer.

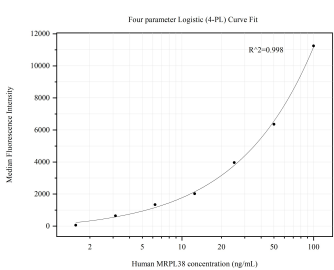
Selected Validation Data



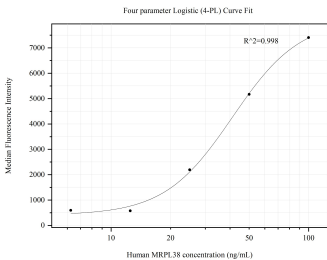
Various lysates were subjected to SDS PAGE followed by western blot with 68418-1-Ig (MRPL38 antibody) at dilution of 1:5000 incubated at room temperature for 1.5 hours. The membrane was stripped and reblotted with HRP-conjugated Alpha Tubulin Monoclonal antibody (HRP-66031) as loading control. This data was developed using the same antibody clone with 68418-1-PBS in a different storage buffer formulation.



IP result of anti-MRPL38 (IP:68418-1-Ig, 4ug; Detection:68418-1-Ig 1:2000) with A549 cells lysate 920 ug. This data was developed using the same antibody clone with 68418-1-PBS in a different storage buffer formulation.



Cytometric bead array standard curve of MP50538-3, MRPL38 Monoclonal Matched Antibody Pair, PBS Only. Capture antibody: 68418-1-PBS. Detection antibody: 68418-2-PBS. Standard:Ag8927. Range: 1.563-100 ng/mL



Cytometric bead array standard curve of MP50538-4, MRPL38 Monoclonal Matched Antibody Pair, PBS Only. Capture antibody: 68418-1-PBS. Detection antibody: 68418-3-PBS. Standard:Ag8927. Range: 6.25-100 ng/mL