

For Research Use Only

ARL3 Monoclonal antibody, PBS Only

Catalog Number: 68421-1-PBS



Basic Information

Catalog Number:

68421-1-PBS

Size:

100ug , Concentration: 1 mg/ml by Nanodrop;

Source:

Mouse

Isotype:

IgG2b

Immunogen Catalog Number:

AG21387

GenBank Accession Number:

BC009841

GeneID (NCBI):

403

UNIPROT ID:

P36405

Full Name:

ADP-ribosylation factor-like 3

Calculated MW:

20 kDa

Observed MW:

20-24 kDa

Purification Method:

Protein A purification

CloneNo.:

2E5B12

Applications

Tested Applications:

WB, IF, Indirect ELISA

Species Specificity:

Human, rat, rabbit

Background Information

ARL3 (ADP-ribosylation factor-like 3) is a member of the ADP-ribosylation factor family of GTP-binding proteins. ARL3 binds guanine nucleotides but lacks ADP-ribosylation factor activity. ARL3 is believed to be involved in ciliary and microtubule-dependent processes.

Storage

Storage:

Store at -80°C.

Storage Buffer:

PBS Only

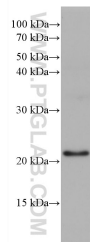
For technical support and original validation data for this product please contact:

T: 1 (888) 4PTGLAB (1-888-478-4522) (toll free in USA), or 1(312) 455-8498 (outside USA)

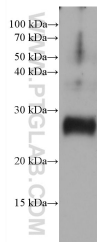
E: proteintech@ptglab.com
W: ptglab.com

This product is exclusively available under Proteintech Group brand and is not available to purchase from any other manufacturer.

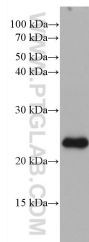
Selected Validation Data



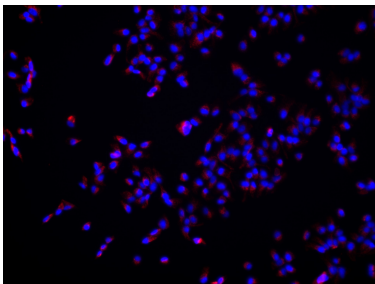
HeLa cells were subjected to SDS PAGE followed by western blot with 68421-1-Ig (ARL3 antibody) at dilution of 1:5000 incubated at room temperature for 1.5 hours. This data was developed using the same antibody clone with 68421-1-PBS in a different storage buffer formulation.



rabbit testis tissue were subjected to SDS PAGE followed by western blot with 68421-1-Ig (ARL3 antibody) at dilution of 1:5000 incubated at room temperature for 1.5 hours. This data was developed using the same antibody clone with 68421-1-PBS in a different storage buffer formulation.



rat retina tissue were subjected to SDS PAGE followed by western blot with 68421-1-Ig (ARL3 antibody) at dilution of 1:5000 incubated at room temperature for 1.5 hours. This data was developed using the same antibody clone with 68421-1-PBS in a different storage buffer formulation.



Immunofluorescent analysis of (4% PFA) fixed hTERT-RPE1 cells using ARL3 antibody (68421-1-Ig, Clone: 2E5B12) at dilution of 1:1000 and Multi-rAb CoraLite® Plus 594-Goat Anti-Mouse Recombinant Secondary Antibody (H+L) (Cat.NO. RGAM004). This data was developed using the same antibody clone with 68421-1-PBS in a different storage buffer formulation.