

For Research Use Only

SSSCA1 Monoclonal antibody

Catalog Number: 68423-1-Ig



Basic Information

Catalog Number: 68423-1-Ig	GenBank Accession Number: BC014791	Purification Method: Protein G purification
Size: 150ul , Concentration: 1000 ug/ml by Nanodrop;	GeneID (NCBI): 10534	CloneNo.: 1D2E8
Source: Mouse	UNIPROT ID: O60232	Recommended Dilutions: WB 1:2000-1:10000 IF/ICC 1:200-1:800
Isotype: IgG1	Full Name: Sjogren syndrome/scleroderma autoantigen 1	
Immunogen Catalog Number: AG16783	Calculated MW: 199 aa, 21 kDa	
	Observed MW: 23 kDa	

Applications

Tested Applications: WB, IF/ICC, ELISA	Positive Controls:
Species Specificity: Human, mouse, rat	WB : A549 cells, LNCaP cells, MCF-7 cells, HeLa cells, HEK-293 cells, Jurkat cells, K-562 cells, HSC-T6 cells, NIH/3T3 cells
	IF/ICC : HeLa cells,

Background Information

SSSCA1, also named as Autoantigen p27, is centromere-associated protein. It may induce anti-centromere antibodies. SSSCA1 plays a role in mitosis. It's involved in Sjogren syndrome/scleroderma. The calculated MW of SSSCA1 is 21.5 kDa (native form), with modification the MW is about 23-27 kDa.

Storage

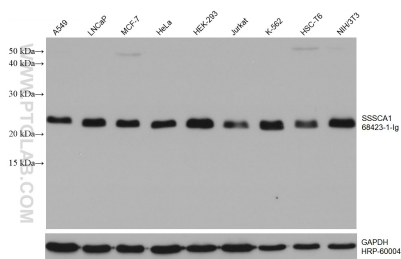
Storage:
Store at -20°C. Stable for one year after shipment.
Storage Buffer:
PBS with 0.02% sodium azide and 50% glycerol pH 7.3.
Aliquoting is unnecessary for -20°C storage

*** 20ul sizes contain 0.1% BSA

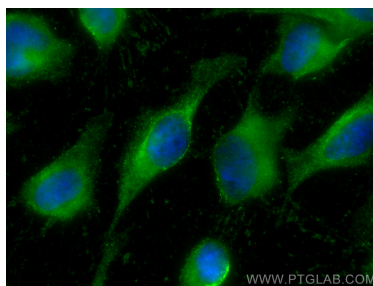
For technical support and original validation data for this product please contact:
T: 1 (888) 4PTGLAB (1-888-478-4522) (toll free in USA), or 1(312) 455-8498 (outside USA)
E: proteintech@ptglab.com
W: ptglab.com

This product is exclusively available under Proteintech Group brand and is not available to purchase from any other manufacturer.

Selected Validation Data



Various lysates were subjected to SDS PAGE followed by western blot with 68423-1-Ig (SSSCA1 antibody) at dilution of 1:5000 incubated at room temperature for 1.5 hours. The membrane was stripped and reblotted with HRP-conjugated GAPDH Monoclonal antibody (HRP-60004) as loading control.



Immunofluorescent analysis of (-20°C Methanol) fixed HeLa cells using SSSCA1 antibody (68423-1-Ig, Clone: 1D2E8) at dilution of 1:400 and CoraLite®488-Conjugated AffiniPure Goat Anti-Mouse IgG(H+L).