

For Research Use Only

ATP6V1H Monoclonal antibody

Catalog Number: 68425-1-Ig



Basic Information

Catalog Number: 68425-1-Ig	GenBank Accession Number: BC025275	Purification Method: Protein G purification
Size: 150ul , Concentration: 1000 ug/ml by Nanodrop;	GeneID (NCBI): 51606	CloneNo.: 3G7B5
Source: Mouse	UNIPROT ID: Q9UI12	Recommended Dilutions: WB 1:5000-1:50000 IF/ICC 1:200-1:800
Isotype: IgG1	Full Name: ATPase, H ⁺ transporting, lysosomal 50/57kDa, V1 subunit H	
Immunogen Catalog Number: AG10130	Calculated MW: 483 aa, 56 kDa	
	Observed MW: 50 kDa	

Applications

Tested Applications: WB, IF/ICC, ELISA	Positive Controls:
Species Specificity: Human, mouse, rat, rabbit, pig	WB : U2OS cells, pig brain tissue, LNCaP cells, HeLa cells, Jurkat cells, K-562 cells, rabbit brain tissue, rat brain tissue, mouse brain tissue
	IF/ICC : HepG2 cells,

Background Information

The vacuolar-type H(+)-ATPase (V-ATPase) is responsible for the acidification of endosomes, lysosomes, and other intracellular organelles. It is also involved in hydrogen ion transport across the plasma membrane into the extracellular space. The V-ATPase is a multisubunit complex with cytosolic and transmembrane domains.

Storage

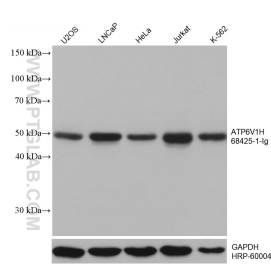
Storage:
Store at -20°C. Stable for one year after shipment.
Storage Buffer:
PBS with 0.02% sodium azide and 50% glycerol pH 7.3.
Aliquoting is unnecessary for -20°C storage

*** 20ul sizes contain 0.1% BSA

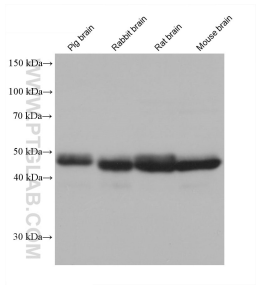
For technical support and original validation data for this product please contact:
T: 1 (888) 4PTGLAB (1-888-478-4522) (toll free in USA), or 1(312) 455-8498 (outside USA)
E: proteintech@ptglab.com
W: ptglab.com

This product is exclusively available under Proteintech Group brand and is not available to purchase from any other manufacturer.

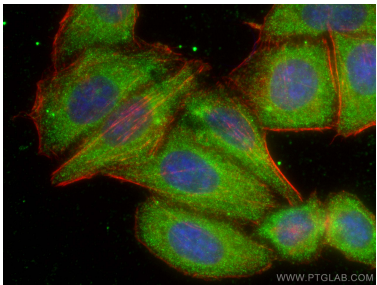
Selected Validation Data



Various lysates were subjected to SDS PAGE followed by western blot with 68425-1-Ig (ATP6V1H antibody) at dilution of 1:10000 incubated at room temperature for 1.5 hours. The membrane was stripped and reblotted with HRP-conjugated GAPDH Monoclonal antibody (HRP-60004) as loading control.



Various lysates were subjected to SDS PAGE followed by western blot with 68425-1-Ig (ATP6V1H antibody) at dilution of 1:10000 incubated at room temperature for 1.5 hours.



Immunofluorescent analysis of (-20°C Ethanol) fixed HepG2 cells using ATP6V1H antibody (68425-1-Ig, Clone: 3G7B5) at dilution of 1:400 and CoraLite®488-Conjugated Goat Anti-Mouse IgG(H+L), CL594-Phalloidin (red).