

For Research Use Only

# ATP6V1H Monoclonal antibody, PBS Only



Catalog Number: 68425-1-PBS

## Basic Information

<b>Catalog Number:</b> 68425-1-PBS	<b>GenBank Accession Number:</b> BC025275	<b>Purification Method:</b> Protein G purification
<b>Size:</b> 100ug , Concentration: 1 mg/ml by Nanodrop;	<b>GeneID (NCBI):</b> 51606	<b>CloneNo.:</b> 3G7B5
<b>Source:</b> Mouse	<b>UNIPROT ID:</b> Q9UI12	
<b>Isotype:</b> IgG1	<b>Full Name:</b> ATPase, H <sup>+</sup> transporting, lysosomal 50/57kDa, V1 subunit H	
<b>Immunogen Catalog Number:</b> AG10130	<b>Calculated MW:</b> 483 aa, 56 kDa	
	<b>Observed MW:</b> 50 kDa	

## Applications

**Tested Applications:**  
WB, IF, Indirect ELISA

**Species Specificity:**  
Human, mouse, rat, rabbit, pig

## Background Information

The vacuolar-type H<sup>(+)</sup>-ATPase (V-ATPase) is responsible for the acidification of endosomes, lysosomes, and other intracellular organelles. It is also involved in hydrogen ion transport across the plasma membrane into the extracellular space. The V-ATPase is a multisubunit complex with cytosolic and transmembrane domains.

## Storage

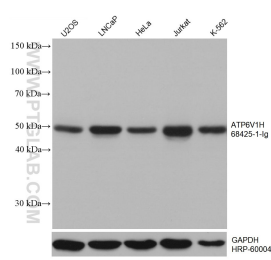
**Storage:**  
Store at -80°C.

**Storage Buffer:**  
PBS Only

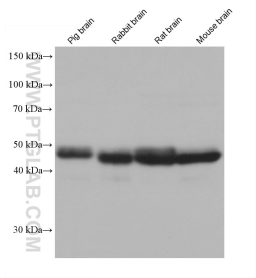
For technical support and original validation data for this product please contact:  
T: 1 (888) 4PTGLAB (1-888-478-4522) (toll free in USA), or 1(312) 455-8498 (outside USA)  
E: [proteintech@ptglab.com](mailto:proteintech@ptglab.com)  
W: [ptglab.com](http://ptglab.com)

This product is exclusively available under Proteintech Group brand and is not available to purchase from any other manufacturer.

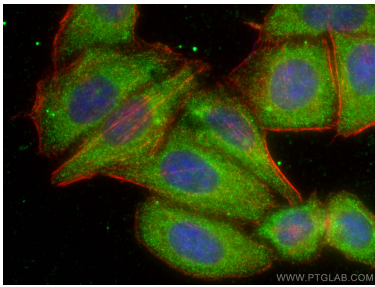
Selected Validation Data



Various lysates were subjected to SDS PAGE followed by western blot with 68425-1-Ig (ATP6V1H antibody) at dilution of 1:10000 incubated at room temperature for 1.5 hours. The membrane was stripped and reblotted with HRP-conjugated GAPDH Monoclonal antibody (HRP-60004) as loading control. This data was developed using the same antibody clone with 68425-1-PBS in a different storage buffer formulation.



Various lysates were subjected to SDS PAGE followed by western blot with 68425-1-Ig (ATP6V1H antibody) at dilution of 1:10000 incubated at room temperature for 1.5 hours. This data was developed using the same antibody clone with 68425-1-PBS in a different storage buffer formulation.



Immunofluorescent analysis of (-20°C Ethanol) fixed HepG2 cells using ATP6V1H antibody (68425-1-Ig, Clone: 3G7B5 ) at dilution of 1:400 and CoraLite®488-Conjugated AffiniPure Goat Anti-Mouse IgG(H+L), CL594-Phalloidin (red). This data was developed using the same antibody clone with 68425-1-PBS in a different storage buffer formulation.