

For Research Use Only

Centrin 1 Monoclonal antibody

Catalog Number: 68433-1-Ig



Basic Information

Catalog Number: 68433-1-Ig	GenBank Accession Number: BC029515	Purification Method: Protein A purification
Size: 150ul , Concentration: 1000 µg/ml by Nanodrop and 681 µg/ml by Bradford method using BSA as the standard;	GeneID (NCBI): 1068	CloneNo.: 1G8D10
Source: Mouse	Full Name: centrin, EF-hand protein, 1	Recommended Dilutions: IF 1:250-1:1000
Isotype: IgG2b	Calculated MW: 172 aa, 20 kDa	
Immunogen Catalog Number: AG3529	Observed MW: 20 kDa	

Applications

Tested Applications: IF, ELISA	Positive Controls: IF : hTERT-RPE1 cells, ARPE-19 cells
Species Specificity: Human	

Background Information

EF-hand type Ca²⁺-binding proteins consists of several family members, including Centrin-1, Centrin-2 and Centrin-3. The Centrin proteins are ubiquitously expressed cytoskeletal components that show increased expression during cell differentiation. Centrin-1 plays important roles in the determination of centrosome position and segregation, and in the process of microtubule severing. Centrin-1 is localized to the centrosome of interphase cells, and redistributes to the region of the spindle poles during mitosis, reflecting the dynamic behavior of the centrosome during the cell cycle.

Storage

Storage:
Store at -20°C. Stable for one year after shipment.
Storage Buffer:
PBS with 0.02% sodium azide and 50% glycerol pH 7.3.
Aliquoting is unnecessary for -20°C storage

*** 20ul sizes contain 0.1% BSA

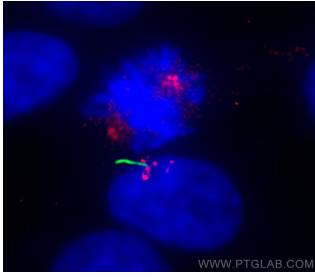
For technical support and original validation data for this product please contact:

T: 1 (888) 4PTGLAB (1-888-478-4522) (toll free in USA), or 1(312) 455-8498 (outside USA)

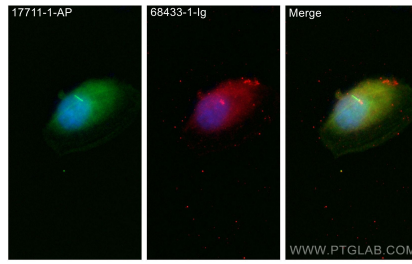
E: proteintech@ptglab.com
W: ptglab.com

This product is exclusively available under Proteintech Group brand and is not available to purchase from any other manufacturer.

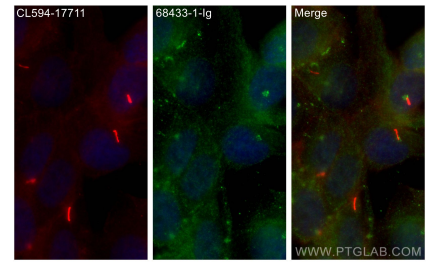
Selected Validation Data



Immunofluorescent analysis of (4% PFA) fixed hTERT-RPE1 cells using CETN1 antibody (68433-1-Ig, Clone: 1G8D10) at dilution of 1:500 and CoraLite®488-Conjugated AffiniPure Goat Anti-Mouse IgG(H+L).



Immunofluorescent analysis of (4% PFA) fixed ARPE-19 cells using CETN1 antibody (68433-1-Ig, Clone: 1G8D10) at dilution of 1:500 and CoraLite®488-Conjugated AffiniPure Goat Anti-Mouse IgG(H+L).



Immunofluorescent analysis of (4% PFA) fixed hTERT-RPE1 cells using CETN1 antibody (68433-1-Ig, Clone: 1G8D10) at dilution of 1:300 and CoraLite®488-Conjugated AffiniPure Goat Anti-Mouse IgG(H+L).