

For Research Use Only

# Centrin 1 Monoclonal antibody, PBS Only



Catalog Number: 68433-1-PBS

## Basic Information

|   |  |   |
|---|--|---|
| <b>Catalog Number:</b><br>68433-1-PBS                       | <b>GenBank Accession Number:</b><br>BC029515     | <b>Purification Method:</b><br>Protein A purification |
| <b>Size:</b><br>100ug , Concentration: 1 mg/ml by Nanodrop; | <b>GeneID (NCBI):</b><br>1068                    | <b>CloneNo.:</b><br>1G8D10                            |
| <b>Source:</b><br>Mouse                                     | <b>UNIPROT ID:</b><br>Q12798                     |   |
| <b>Isotype:</b><br>IgG2b                                    | <b>Full Name:</b><br>centrin, EF-hand protein, 1 |   |
| <b>Immunogen Catalog Number:</b><br>AG3529                  | <b>Calculated MW:</b><br>172 aa, 20 kDa          |   |
|   | <b>Observed MW:</b><br>20 kDa                    |   |

## Applications

**Tested Applications:**  
IF, Indirect ELISA

**Species Specificity:**  
Human

## Background Information

EF-hand type Ca<sup>2+</sup>-binding proteins consists of several family members, including Centrin-1, Centrin-2 and Centrin-3. The Centrin proteins are ubiquitously expressed cytoskeletal components that show increased expression during cell differentiation. Centrin-1 plays important roles in the determination of centrosome position and segregation, and in the process of microtubule severing. Centrin-1 is localized to the centrosome of interphase cells, and redistributes to the region of the spindle poles during mitosis, reflecting the dynamic behavior of the centrosome during the cell cycle.

## Storage

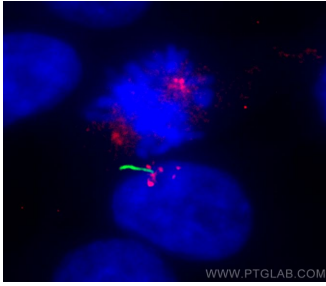
**Storage:**  
Store at -80°C.

**Storage Buffer:**  
PBS Only

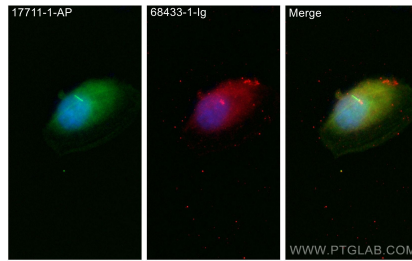
For technical support and original validation data for this product please contact:  
T: 1 (888) 4PTGLAB (1-888-478-4522) (toll free in USA), or 1(312) 455-8498 (outside USA)      E: proteintech@ptglab.com  
W: ptglab.com

This product is exclusively available under Proteintech Group brand and is not available to purchase from any other manufacturer.

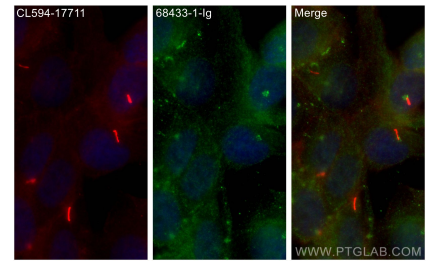
## Selected Validation Data



Immunofluorescent analysis of (4% PFA) fixed hTERT-RPE1 cells using CETN1 antibody (68433-1-Ig, Clone: 1G8D10) at dilution of 1:500 and CoraLite@488-Conjugated AffiniPure Goat Anti-Mouse IgG(H+L). This data was developed using the same antibody clone with 68433-1-PBS in a different storage buffer formulation.



Immunofluorescent analysis of (4% PFA) fixed ARPE-19 cells using CETN1 antibody (68433-1-Ig, Clone: 1G8D10) at dilution of 1:500 and CoraLite@488-Conjugated AffiniPure Goat Anti-Mouse IgG(H+L). This data was developed using the same antibody clone with 68433-1-PBS in a different storage buffer formulation.



Immunofluorescent analysis of (4% PFA) fixed hTERT-RPE1 cells using CETN1 antibody (68433-1-Ig, Clone: 1G8D10) at dilution of 1:300 and CoraLite@488-Conjugated AffiniPure Goat Anti-Mouse IgG(H+L). This data was developed using the same antibody clone with 68433-1-PBS in a different storage buffer formulation.