

For Research Use Only

BHLHE40 Monoclonal antibody

Catalog Number: 68435-1-Ig



Basic Information

Catalog Number: 68435-1-Ig	GenBank Accession Number: BC082238	Purification Method: Protein A purification
Size: 150ul , Concentration: 1000 µg/ml by Nanodrop;	GeneID (NCBI): 8553	CloneNo.: 1A3E1
Source: Mouse	Full Name: basic helix-loop-helix family, member e40	Recommended Dilutions: WB 1:5000-1:50000
Isotype: IgG2a	Calculated MW: 412 aa, 46 kDa	
Immunogen Catalog Number: AG12236	Observed MW: 46-50 kDa	

Applications

Tested Applications:
WB, ELISA

Species Specificity:
Human

Positive Controls:

WB : Calu-3 cells, A549 cells, HCT 116 cells, MDA-MB-468 cells, Saos-2 cells, HeLa cells, PC-3 cells, K-562 cells

Background Information

BHLHE40 (Basic Helix-Loop-Helix Family Member E40), also known as BHLHB2, STRA13, DEC1, or SHARP2, is a member of the basic helix-loop-helix (bHLH) protein family, a large superfamily of transcriptional regulators expressed in many organisms. BHLHE40 is known to regulate a wide variety of essential cellular processes, including cell cycle, cellular proliferation, programmed cell death, cellular development and differentiation, as well as circadian rhythms (PMID: 3451158). It is reported that BHLHE40 is overexpressed in gastric, breast, and brain tumors; and downregulated in colorectal, esophageal, pancreatic and lung cancer (PMID: 32577154).

Storage

Storage:
Store at -20°C. Stable for one year after shipment.

Storage Buffer:
PBS with 0.02% sodium azide and 50% glycerol pH 7.3.

Aliquoting is unnecessary for -20°C storage

*** 20ul sizes contain 0.1% BSA

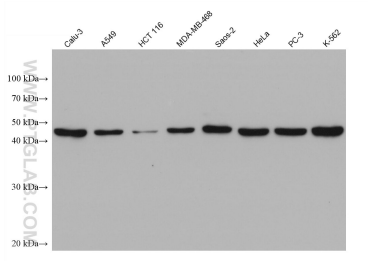
For technical support and original validation data for this product please contact:

T: 1 (888) 4PTGLAB (1-888-478-4522) (toll free in USA), or 1(312) 455-8498 (outside USA)

E: proteintech@ptglab.com
W: ptglab.com

This product is exclusively available under Proteintech Group brand and is not available to purchase from any other manufacturer.

Selected Validation Data



Various lysates were subjected to SDS PAGE followed by western blot with 68435-1-Ig (BHLHE40 antibody) at dilution of 1:10000 incubated at room temperature for 1.5 hours.