

For Research Use Only

ATP6V1A Monoclonal antibody

Catalog Number: 68440-1-Ig

Featured Product



Basic Information

Catalog Number:

68440-1-Ig

Size:

150ul, Concentration: 1000 ug/ml by Nanodrop;

Source:

Mouse

Isotype:

IgG2a

Immunogen Catalog Number:

AG10820

GenBank Accession Number:

BC013138

GeneID (NCBI):

523

UNIPROT ID:

P38606

Full Name:

ATPase, H⁺ transporting, lysosomal 70kDa, V1 subunit A

Calculated MW:

617 aa, 68 kDa

Observed MW:

68 kDa

Purification Method:

Protein A purification

CloneNo.:

1C5G2

Recommended Dilutions:

WB: 1:5000-1:40000

IHC: 1:1000-1:4000

FC (Intra): 0.25 ug per 10⁶ cells in a 100 µl suspension

Applications

Tested Applications:

WB, IHC, ELISA

Species Specificity:

human, mouse, rat, pig, rabbit

Note-IHC: suggested antigen retrieval with TE buffer pH 9.0; (*) Alternatively, antigen retrieval may be performed with citrate buffer pH 6.0

Positive Controls:

WB: HeLa cells, Jurkat cells, K-562 cells, HSC-T6 cells, NIH/3T3 cells, pig brain tissue, rabbit brain tissue, rat brain tissue, mouse brain tissue

IHC: mouse kidney tissue,

FC (Intra): HeLa cells,

Background Information

The vacuolar-type H⁽⁺⁾-ATPase (V-ATPase) is responsible for the acidification of endosomes, lysosomes, and other intracellular organelles. It is also involved in hydrogen ion transport across the plasma membrane into the extracellular space. The V-ATPase is a multisubunit complex with cytosolic and transmembrane domains. The cytosolic catalytic domain consists of 3 A subunits and 3 B subunits, which bind and hydrolyze ATP, as well as regulatory accessory subunits. ATP6V1A is V-type proton ATPase catalytic subunit A.

Storage

Storage:

Store at -20°C. Stable for one year after shipment.

Storage Buffer:

PBS with 0.02% sodium azide and 50% glycerol, pH7.3

Aliquoting is unnecessary for -20°C storage

*** 20ul sizes contain 0.1% BSA

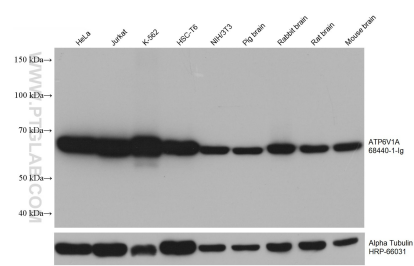
For technical support and original validation data for this product please contact:

T: 1 (888) 4PTGLAB (1-888-478-4522) (toll free in USA), or 1(312) 455-8498 (outside USA)

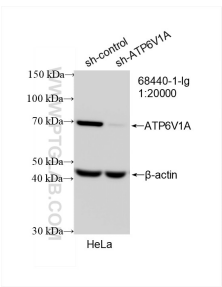
E: proteintech@ptglab.com
W: ptglab.com

This product is exclusively available under Proteintech Group brand and is not available to purchase from any other manufacturer.

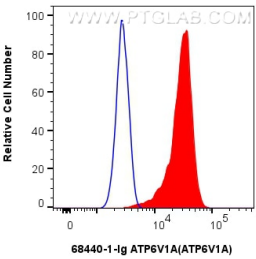
Selected Validation Data



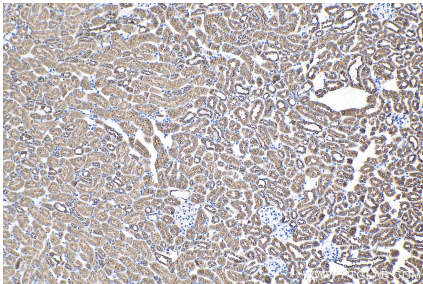
Various lysates were subjected to SDS PAGE followed by western blot with 68440-1-Ig (ATP6V1A antibody) at dilution of 1:20000 incubated at room temperature for 1.5 hours. The membrane was stripped and reblotted with HRP-conjugated Alpha Tubulin Monoclonal antibody (HRP-66031) as loading control.



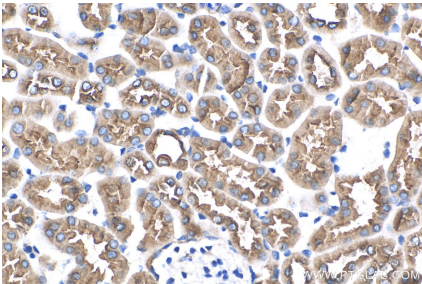
WB result of ATP6V1A antibody (68440-1-Ig; 1:20000; incubated at room temperature for 1.5 hours) with sh-Control and sh-ATP6V1A transfected HeLa cells.



1x10⁶ HeLa cells were intracellularly stained with 0.25 ug ATP6V1A Monoclonal antibody (68440-1-Ig, Clone:1C5G2) and CoraLite®488-Conjugated Goat Anti-Mouse IgG(H+L) (SA00013-1)(red), or 0.25 ug Mouse IgG2a isotype control Mouse McAb (66360-2-Ig, Clone: 11A1B2) (blue). Cells were fixed with 4% PFA and permeabilized with Flow Cytometry Perm Buffer (PF00011-C).



Immunohistochemical analysis of paraffin-embedded mouse kidney tissue slide using 68440-1-Ig (ATP6V1A antibody) at dilution of 1:2000 (under 10x lens). Heat mediated antigen retrieval with Tris-EDTA buffer (pH 9.0).



Immunohistochemical analysis of paraffin-embedded mouse kidney tissue slide using 68440-1-Ig (ATP6V1A antibody) at dilution of 1:2000 (under 40x lens). Heat mediated antigen retrieval with Tris-EDTA buffer (pH 9.0).