

For Research Use Only

ATP6V1B2 Monoclonal antibody

Catalog Number: 68441-1-Ig

Featured Product



Basic Information

Catalog Number:

68441-1-Ig

Size:

150ul, Concentration: 1000 ug/ml by Nanodrop;

Source:

Mouse

Isotype:

IgG1

Immunogen Catalog Number:

AG7265

GenBank Accession Number:

BC003100

GeneID (NCBI):

526

UNIPROT ID:

P21281

Full Name:

ATPase, H⁺ transporting, lysosomal 56/58kDa, V1 subunit B2

Calculated MW:

57 kDa

Observed MW:

56-58 kDa

Purification Method:

Protein G purification

CloneNo.:

3C11A9

Recommended Dilutions:

WB 1:5000-1:40000

IP 0.5-4.0 ug for 1.0-3.0 mg of total protein lysate

Applications

Tested Applications:

WB, FC (Intra), IP, ELISA

Species Specificity:

human, mouse, rat, pig, rabbit

Positive Controls:

WB : HeLa cells, A549 cells, Jurkat cells, K-562 cells, HSC-T6 cells, NIH/3T3 cells, pig brain tissue, rabbit brain tissue, mouse brain tissue

IP : HeLa cells,

Background Information

ATP6V1B2(V-type proton ATPase subunit B, brain isoform) is also named as ATP6B2, VPP3,HO57. It belongs to the ATPase alpha/beta chains family.V-ATPase is an heteromultimeric enzyme composed of a peripheral catalytic V1 complex attached to an integral membrane V0 proton pore complex.The quasi-ubiquitous ATP6V1B2 is one of 2 isoforms of ATP6V1 and is expressed in most cell types, where it plays a major role in organelle acidification(PMID:18667600).

Storage

Storage:

Store at -20°C. Stable for one year after shipment.

Storage Buffer:

PBS with 0.02% sodium azide and 50% glycerol pH 7.3.

Aliquoting is unnecessary for -20°C storage

*** 20ul sizes contain 0.1% BSA

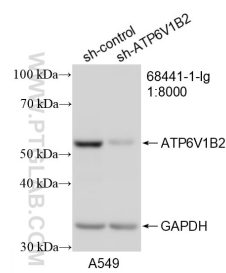
For technical support and original validation data for this product please contact:

T: 1 (888) 4PTGLAB (1-888-478-4522) (toll free in USA), or 1(312) 455-8498 (outside USA)

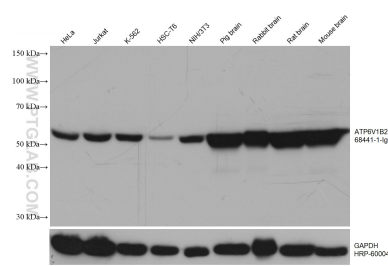
E: proteintech@ptglab.com
W: ptglab.com

This product is exclusively available under Proteintech Group brand and is not available to purchase from any other manufacturer.

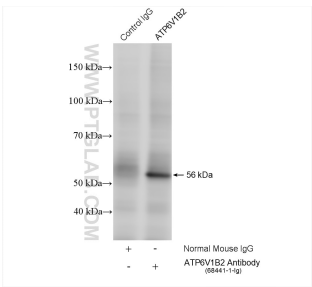
Selected Validation Data



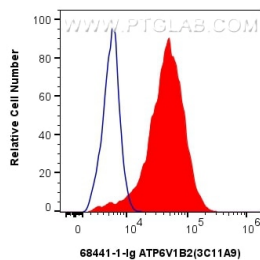
WB result of ATP6V1B2 antibody (68441-1-Ig; 1:8000; incubated at room temperature for 1.5 hours) with sh-Control and sh-ATP6V1B2 transfected A549 cells.



Various lysates were subjected to SDS PAGE followed by western blot with 68441-1-Ig (ATP6V1B2 antibody) at dilution of 1:20000 incubated at room temperature for 1.5 hours. The membrane was stripped and reblotted with HRP-conjugated GAPDH Monoclonal antibody (HRP-60004) as loading control.



IP result of anti-ATP6V1B2 (IP:68441-1-Ig, 4ug; Detection:68441-1-Ig 1:4000) with HeLa cells lysate 2000 ug.



1x10⁶ HeLa cells were intracellularly stained with 0.8 ug ATP6V1B2 Monoclonal antibody (68441-1-Ig, Clone:3C11A9) and CoraLite®488-Conjugated Goat Anti-Mouse IgG(H+L) (SA00013-1)(red), or 0.8 ug Mouse IgG1 isotype control Mouse McAb (66360-1-Ig, Clone: 1F8D3) (blue). Cells were fixed with 4% PFA and permeabilized with Flow Cytometry Perm Buffer (PF00011-C).