

For Research Use Only

ATP6V1B2 Monoclonal antibody, PBS Only



Catalog Number: 68441-1-PBS

Featured Product

Basic Information

Catalog Number:

68441-1-PBS

Size:

100ug , Concentration: 1mg/ml by Nanodrop;

Source:

Mouse

Isotype:

IgG1

Immunogen Catalog Number:

AG7265

GenBank Accession Number:

BC003100

GeneID (NCBI):

526

UNIPROT ID:

P21281

Full Name:

ATPase, H⁺ transporting, lysosomal 56/58kDa, V1 subunit B2

Calculated MW:

57 kDa

Observed MW:

56-58 kDa

Purification Method:

Protein G purification

CloneNo.:

3C11A9

Applications

Tested Applications:

Indirect ELISA, IP, WB

Species Specificity:

rabbit, pig, rat, mouse, human

Background Information

ATP6V1B2(V-type proton ATPase subunit B, brain isoform) is also named as ATP6B2, VPP3,HO57. It belongs to the ATPase alpha/beta chains family.V-ATPase is an heteromultimeric enzyme composed of a peripheral catalytic V1 complex attached to an integral membrane V0 proton pore complex.The quasi-ubiquitous ATP6V1B2 is one of 2 isoforms of ATP6V1 and is expressed in most cell types, where it plays a major role in organelle acidification(PMID:18667600).

Storage

Storage:

Store at -80°C.

Storage Buffer:

PBS Only

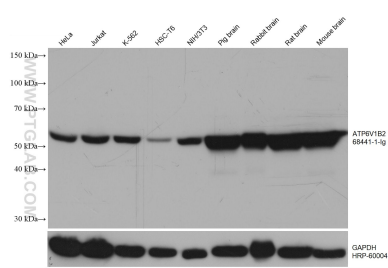
For technical support and original validation data for this product please contact:

T: 1 (888) 4PTGLAB (1-888-478-4522) (toll free in USA), or 1(312) 455-8498 (outside USA)

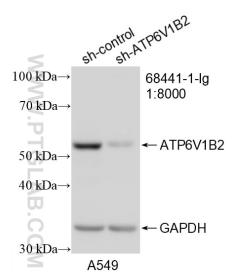
E: proteintech@ptglab.com
W: ptglab.com

This product is exclusively available under Proteintech Group brand and is not available to purchase from any other manufacturer.

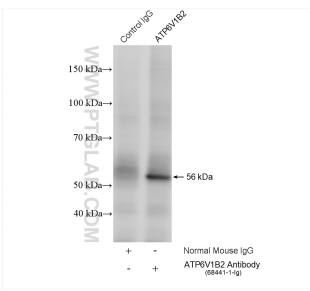
Selected Validation Data



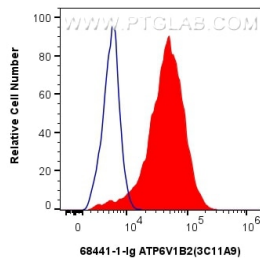
Various lysates were subjected to SDS PAGE followed by western blot with 68441-1-Ig (ATP6V1B2 antibody) at dilution of 1:20000 incubated at room temperature for 1.5 hours. The membrane was stripped and reblotted with HRP-conjugated GAPDH Monoclonal antibody (HRP-60004) as loading control. This data was developed using the same antibody clone with 68441-1-PBS in a different storage buffer formulation.



WB result of ATP6V1B2 antibody (68441-1-Ig; 1:8000; incubated at room temperature for 1.5 hours) with sh-Control and sh-ATP6V1B2 transfected A549 cells. This data was developed using the same antibody clone with 68441-1-PBS in a different storage buffer formulation.



IP result of anti-ATP6V1B2 (IP:68441-1-Ig, 4ug; Detection:68441-1-Ig 1:4000) with HeLa cells lysate 2000 ug. This data was developed using the same antibody clone with 68441-1-PBS in a different storage buffer formulation.



1x10⁶ HeLa cells were intracellularly stained with 0.8 ug ATP6V1B2 Monoclonal antibody (68441-1-Ig, Clone:3C11A9) and CoraLite®488-Conjugated AffiniPure Goat Anti-Mouse IgG(H+L) (SA00013-1)(red), or 0.8 ug Mouse IgG1 isotype control Mouse McAb (66360-1-Ig, Clone: 1F8D3) (blue). Cells were fixed with 4% PFA and permeabilized with Flow Cytometry Perm Buffer (PF00011-C). This data was developed using the same antibody clone with 68441-1-PBS in a

