

For Research Use Only

ATP6 Monoclonal antibody

Catalog Number: 68442-1-Ig **1 Publications**



Basic Information

Catalog Number: 68442-1-Ig	GenBank Accession Number: YP_003024031	Purification Method: Protein G purification
Size: 150ul , Concentration: 1000 ug/ml by Nanodrop;	GeneID (NCBI): 4508	CloneNo.: 1H4G5
Source: Mouse	UNIPROT ID: P00846	Recommended Dilutions: WB 1:5000-1:50000
Isotype: IgG1	Full Name: ATP synthase 6; ATPase subunit 6	
Immunogen Catalog Number: AG31940	Calculated MW: 25 kDa	
	Observed MW: 25-30 kDa	

Applications

Tested Applications: WB, ELISA	Positive Controls: WB : rat cerebellum tissue, Rat heart tissue, Rat liver tissue
Cited Applications: WB	
Species Specificity: Human, Rat	
Cited Species: rat	

Background Information

ATP synthase, also known as FoF1 complex, is a critical mitochondrial OXPHOS enzyme involved in the regulation of mitochondrial ATP production and in the maintenance of the mitochondrial membrane potential. It is composed of three components (F1, Fo and the peripheral stalk). F1, the soluble catalytic core, is above the membrane, inside the matrix of the mitochondria; consists of 5 different subunits (alpha, beta, gamma, delta, and epsilon); Fo, comprising the proton channel, is within the membrane; Fo seems to have nine subunits (a, b, c, d, e, f, g, F6 and 8). ATP6 is the a subunit of Fo region.

Notable Publications

Author	Pubmed ID	Journal	Application
Zhiyuan Tian	38677116	J Hazard Mater	WB

Storage

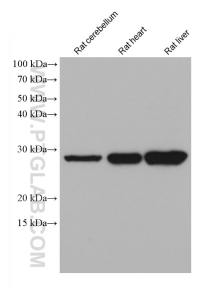
Storage:
Store at -20°C. Stable for one year after shipment.
Storage Buffer:
PBS with 0.02% sodium azide and 50% glycerol pH 7.3.
Aliquoting is unnecessary for -20°C storage

*** 20ul sizes contain 0.1% BSA

For technical support and original validation data for this product please contact:
T: 1 (888) 4PTGLAB (1-888-478-4522) (toll free in USA), or 1(312) 455-8498 (outside USA)
E: proteintech@ptglab.com
W: ptglab.com

This product is exclusively available under Proteintech Group brand and is not available to purchase from any other manufacturer.

Selected Validation Data



Various lysates were subjected to SDS PAGE followed by western blot with 68442-1-Ig (ATP6 antibody) at dilution of 1:10000 incubated at room temperature for 1.5 hours.