

For Research Use Only

ATP6 Monoclonal antibody, PBS Only

Catalog Number: 68442-1-PBS



Basic Information

Catalog Number: 68442-1-PBS	GenBank Accession Number: YP_003024031	Purification Method: Protein G purification
Size: 100ug , Concentration: 1 mg/ml by Nanodrop;	GeneID (NCBI): 4508	CloneNo.: 1H4G5
Source: Mouse	UNIPROT ID: P00846	
Isotype: IgG1	Full Name: ATP synthase 6; ATPase subunit 6	
Immunogen Catalog Number: AG31940	Calculated MW: 25 kDa	
	Observed MW: 25-30 kDa	

Applications

Tested Applications:
WB, Indirect ELISA

Species Specificity:
Human, Rat

Background Information

ATP synthase, also known as FoF1 complex, is a critical mitochondrial OXPHOS enzyme involved in the regulation of mitochondrial ATP production and in the maintenance of the mitochondrial membrane potential. It is composed of three components (F1, Fo and the peripheral stalk). F1, the soluble catalytic core, is above the membrane, inside the matrix of the mitochondria; consists of 5 different subunits (alpha, beta, gamma, delta, and epsilon); Fo, comprising the proton channel, is within the membrane; Fo seems to have nine subunits (a, b, c, d, e, f, g, F6 and 8). ATP6 is the a subunit of Fo region.

Storage

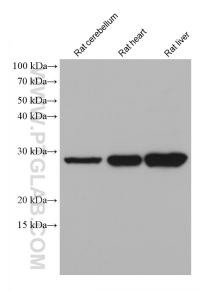
Storage:
Store at -80°C.

Storage Buffer:
PBS Only

For technical support and original validation data for this product please contact:
T: 1 (888) 4PTGLAB (1-888-478-4522) (toll free in USA), or 1(312) 455-8498 (outside USA)
E: proteintech@ptglab.com
W: ptglab.com

This product is exclusively available under Proteintech Group brand and is not available to purchase from any other manufacturer.

Selected Validation Data



Various lysates were subjected to SDS PAGE followed by western blot with 68442-1-Ig (ATP6 antibody) at dilution of 1:10000 incubated at room temperature for 1.5 hours. This data was developed using the same antibody clone with 68442-1-PBS in a different storage buffer formulation.