

For Research Use Only

# OTUD6B Monoclonal antibody

Catalog Number: 68450-1-Ig



## Basic Information

<b>Catalog Number:</b> 68450-1-Ig	<b>GenBank Accession Number:</b> BC029760	<b>Purification Method:</b> Protein A purification
<b>Size:</b> 150ul , Concentration: 1000 ug/ml by Nanodrop;	<b>GeneID (NCBI):</b> 51633	<b>CloneNo.:</b> 1D1G1
<b>Source:</b> Mouse	<b>UNIPROT ID:</b> Q8N6M0	<b>Recommended Dilutions:</b> WB 1:5000-1:50000 IF/ICC 1:400-1:1600
<b>Isotype:</b> IgG1	<b>Full Name:</b> OTU domain containing 6B	
<b>Immunogen Catalog Number:</b> AG33607	<b>Calculated MW:</b> 293 aa, 34 kDa	
	<b>Observed MW:</b> 34-40 kDa	

## Applications

<b>Tested Applications:</b> WB, IF/ICC, ELISA	<b>Positive Controls:</b>
<b>Species Specificity:</b> human, mouse, rat	<b>WB :</b> A549 cells, HeLa cells, HEK-293 cells, HepG2 cells, Jurkat cells, K-562 cells, HSC-T6 cells, NIH/3T3 cells, 4T1 cells
	<b>IF/ICC :</b> PC-3 cells,

## Background Information

OTUD6B, also known as DUBA5, belongs to a DUB subfamily characterized by an ovarian tumor domain (OTU). It's a functional deubiquitinating enzyme, a class of protease that specifically cleaves ubiquitin linkages. OTUD6B function may be connected to growth and proliferation. It has been reported that OTUD6B could significantly suppress HCC cells migration and metastasis. The calculated molecular weight of OTUD6B is 34 kDa, 68450-1-Ig can detect the band around 34 kDa.(PMID:32323143)

## Storage

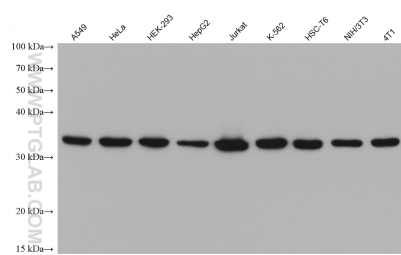
**Storage:**  
Store at -20°C. Stable for one year after shipment.  
**Storage Buffer:**  
PBS with 0.02% sodium azide and 50% glycerol pH 7.3.  
Aliquoting is unnecessary for -20°C storage

\*\*\* 20ul sizes contain 0.1% BSA

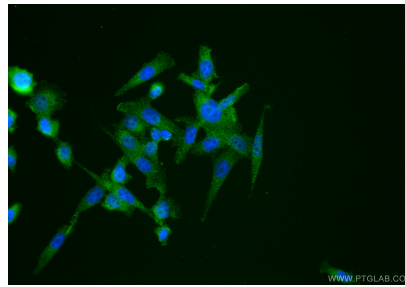
For technical support and original validation data for this product please contact:  
T: 1 (888) 4PTGLAB (1-888-478-4522) (toll free in USA), or 1(312) 455-8498 (outside USA)  
E: [proteintech@ptglab.com](mailto:proteintech@ptglab.com)  
W: [ptglab.com](http://ptglab.com)

This product is exclusively available under Proteintech Group brand and is not available to purchase from any other manufacturer.

## Selected Validation Data



Various lysates were subjected to SDS PAGE followed by western blot with 68450-1-Ig (OTUD6B antibody) at dilution of 1:10000 incubated at room temperature for 1.5 hours.



Immunofluorescent analysis of (-20°C Ethanol) fixed PC-3 cells using OTUD6B antibody (68450-1-Ig, Clone: 1D1G1) at dilution of 1:800 and CoraLite®488-Conjugated Goat Anti-Mouse IgG(H+L) (SA00013-1).