

For Research Use Only

CAMK4 Monoclonal antibody

Catalog Number: 68452-1-Ig



Basic Information

Catalog Number: 68452-1-Ig	GenBank Accession Number: BC025687	Purification Method: Protein G purification
Size: 150ul , Concentration: 1000 ug/ml by Nanodrop;	GeneID (NCBI): 814	CloneNo.: 1G7A7
Source: Mouse	UNIPROT ID: Q16566	Recommended Dilutions: WB 1:2000-1:10000
Isotype: IgG1	Full Name: calcium/calmodulin-dependent protein kinase IV	
Immunogen Catalog Number: AG33332	Calculated MW: 473 aa, 52 kDa	
	Observed MW: 56-65 kDa	

Applications

Tested Applications: WB, ELISA	Positive Controls:
Species Specificity: Human, mouse, rat	WB : rat brain tissue, mouse brain tissue, rat thymus tissue

Background Information

CaMK4 (Calcium/calmodulin-dependent protein kinase IV) is a multifunctional serine/threonine kinase that regulates gene expression by activating transcription factors in a wide range of immune cells including T cells and antigen-presenting cells. The function of CaMK4 is suggested to be abnormal mainly in systemic lupus erythematosus (SLE), which is characterized by autoantibody production, immune complex formation, and immune dysregulation (PMID: 29252071). CaMKIV can translocate between the nucleus and cytoplasm (PMID: 21301225)

Storage

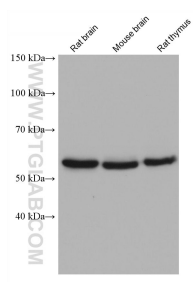
Storage:
Store at -20°C. Stable for one year after shipment.
Storage Buffer:
PBS with 0.02% sodium azide and 50% glycerol pH 7.3.
Aliquoting is unnecessary for -20°C storage

*** 20ul sizes contain 0.1% BSA

For technical support and original validation data for this product please contact:
T: 1 (888) 4PTGLAB (1-888-478-4522) (toll free in USA), or 1(312) 455-8498 (outside USA)
E: proteintech@ptglab.com
W: ptglab.com

This product is exclusively available under Proteintech Group brand and is not available to purchase from any other manufacturer.

Selected Validation Data



Various lysates were subjected to SDS PAGE followed by western blot with 68452-1-Ig (CAMK4 antibody) at dilution of 1:5000 incubated at room temperature for 1.5 hours.