

For Research Use Only

CDC25A Monoclonal antibody, PBS Only



Catalog Number: 68457-1-PBS

Basic Information

Catalog Number:

68457-1-PBS

Size:

100ug , Concentration: 1 mg/ml by Nanodrop;

Source:

Mouse

Isotype:

IgG1

GenBank Accession Number:

NM_001789

GeneID (NCBI):

993

UNIPROT ID:

P30304

Full Name:

cell division cycle 25 homolog A (S. pombe)

Calculated MW:

59 kDa

Observed MW:

55-60 kDa

Purification Method:

Protein A purification

CloneNo.:

3C3A8

Applications

Tested Applications:

WB, Indirect ELISA

Species Specificity:

Human, mouse, rat

Storage

Storage:

Store at -80°C.

Storage Buffer:

PBS Only

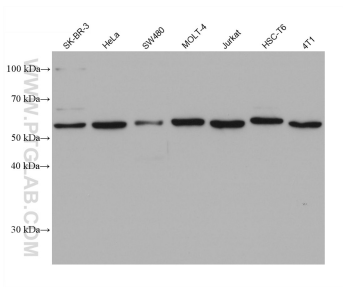
For technical support and original validation data for this product please contact:

T: 1 (888) 4PTGLAB (1-888-478-4522) (toll free in USA), or 1(312) 455-8498 (outside USA)

E: proteintech@ptglab.com
W: ptglab.com

This product is exclusively available under Proteintech Group brand and is not available to purchase from any other manufacturer.

Selected Validation Data



Various lysates were subjected to SDS PAGE followed by western blot with 68457-1-Ig (CDC25A antibody) at dilution of 1:20000 incubated at room temperature for 1.5 hours. This data was developed using the same antibody clone with 68457-1-PBS in a different storage buffer formulation.