

For Research Use Only

# CRTAP Monoclonal antibody

Catalog Number: 68458-1-Ig



## Basic Information

Catalog Number:

68458-1-Ig

Size:

150ul, Concentration: 1000 ug/ml by Nanodrop;

Source:

Mouse

Isotype:

IgG1

Immunogen Catalog Number:

AG8456

GenBank Accession Number:

BC008745

GeneID (NCBI):

10491

UNIPROT ID:

O75718

Full Name:

cartilage associated protein

Calculated MW:

46.5 kDa

Observed MW:

43-47 kDa

Purification Method:

Protein G purification

CloneNo.:

2G1G6

Recommended Dilutions:

WB 1:2000-1:10000

## Applications

Tested Applications:

WB, ELISA

Species Specificity:

Human

Positive Controls:

WB : HT-1080 cells, HT1080, HT-1376, Saos-2, MDA-MB-231, HeLa, U251

## Storage

Storage:

Store at -20°C. Stable for one year after shipment.

Storage Buffer:

PBS with 0.02% sodium azide and 50% glycerol pH 7.3.

Aliquoting is unnecessary for -20°C storage

\*\*\* 20ul sizes contain 0.1% BSA

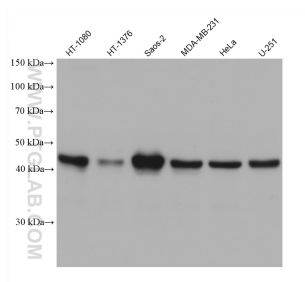
For technical support and original validation data for this product please contact:

T: 1 (888) 4PTGLAB (1-888-478-4522) (toll free in USA), or 1(312) 455-8498 (outside USA)

E: [proteintech@ptglab.com](mailto:proteintech@ptglab.com)  
W: [ptglab.com](http://ptglab.com)

This product is exclusively available under Proteintech Group brand and is not available to purchase from any other manufacturer.

## Selected Validation Data



Various lysates were subjected to SDS PAGE followed by western blot with 68458-1-Ig (CRTAP antibody) at dilution of 1:5000 incubated at room temperature for 1.5 hours.