

For Research Use Only

# SQRDL Monoclonal antibody

Catalog Number: 68459-1-Ig



## Basic Information

<b>Catalog Number:</b> 68459-1-Ig	<b>GenBank Accession Number:</b> BC016836	<b>Purification Method:</b> Protein A purification
<b>Size:</b> 150ul , Concentration: 1000 µg/ml by Nanodrop;	<b>GeneID (NCBI):</b> 58472	<b>CloneNo.:</b> 1B4E3
<b>Source:</b> Mouse	<b>Full Name:</b> sulfide quinone reductase-like (yeast)	<b>Recommended Dilutions:</b> WB 1:5000-1:20000 IP 0.5-4.0 ug for IP and 1:1000-1:6000 for WB
<b>Isotype:</b> IgG2b	<b>Calculated MW:</b> 450 aa, 50 kDa	
<b>Immunogen Catalog Number:</b> AG10762	<b>Observed MW:</b> 50 kDa	

## Applications

### Tested Applications:

IP, WB, ELISA

### Species Specificity:

Human, pig

### Positive Controls:

WB : A549 cells, HeLa cells, HepG2 cells, HT-29 cells, hTERT-RPE1 cells, THP-1 cells, pig liver tissue

IP : HeLa cells,

## Background Information

SQRDL(Sulfide:quinone oxidoreductase, mitochondrial) catalyzes the oxidation of hydrogen sulfide, with the help of a quinone. Although the SQRDL precursor protein displays a molecular weight of 50 kDa, a prominent band at about 46 kDa is detected by western blot. This discrepancy reflects the cleavage of an N-terminal targeting sequence of 4 kDa during the import of the protein into the mitochondria (PMID:22067608). SQRDL is one of the enzymes involved in H<sub>2</sub>S signaling in a discrete population of neurons, oligodendrocytes, and endothelial cells.

## Storage

### Storage:

Store at -20°C. Stable for one year after shipment.

### Storage Buffer:

PBS with 0.02% sodium azide and 50% glycerol pH 7.3.

Aliquoting is unnecessary for -20°C storage

\*\*\* 20ul sizes contain 0.1% BSA

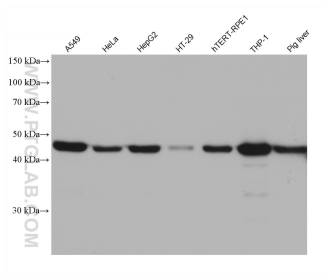
For technical support and original validation data for this product please contact:

T: 1 (888) 4PTGLAB (1-888-478-4522) (toll free  
in USA), or 1(312) 455-8498 (outside USA)

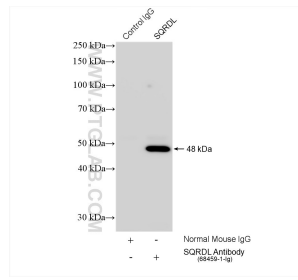
E: [proteintech@ptglab.com](mailto:proteintech@ptglab.com)  
W: [ptglab.com](http://ptglab.com)

This product is exclusively available under Proteintech Group brand and is not available to purchase from any other manufacturer.

## Selected Validation Data



Various lysates were subjected to SDS PAGE followed by western blot with 68459-1-Ig (SQRDL antibody) at dilution of 1:20000 incubated at room temperature for 1.5 hours.



IP result of anti-SQRDL(IP:68459-1-Ig, 4ug; Detection:68459-1-Ig 1:3000) with HeLa cells lysate 1560 ug.