

For Research Use Only

MYH6 Monoclonal antibody

Catalog Number: 68461-1-Ig



Basic Information

Catalog Number:

68461-1-Ig

Size:

150ul, Concentration: 1000 ug/ml by 4624

Nanodrop;

Source:

Mouse

Isotype:

IgG1

GenBank Accession Number:

NM_002471

GeneID (NCBI):

4624

UNIPROT ID:

P13533

Full Name:

myosin, heavy chain 6, cardiac muscle, alpha

Calculated MW:

224 kDa

Observed MW:

200-220 kDa

Purification Method:

Protein G purification

CloneNo.:

1A5E5

Recommended Dilutions:

WB 1:5000-1:50000

Applications

Tested Applications:

WB, ELISA

Species Specificity:

mouse, rat

Positive Controls:

WB : mouse heart tissue, rat heart tissue

Storage

Storage:

Store at -20°C. Stable for one year after shipment.

Storage Buffer:

PBS with 0.02% sodium azide and 50% glycerol pH 7.3.

Aliquoting is unnecessary for -20°C storage

*** 20ul sizes contain 0.1% BSA

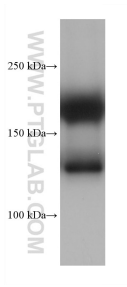
For technical support and original validation data for this product please contact:

T: 1 (888) 4PTGLAB (1-888-478-4522) (toll free in USA), or 1(312) 455-8498 (outside USA)

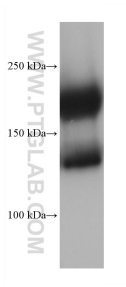
E: proteintech@ptglab.com
W: ptglab.com

This product is exclusively available under Proteintech Group brand and is not available to purchase from any other manufacturer.

Selected Validation Data



rat heart tissue were subjected to SDS PAGE followed by western blot with 68461-1-Ig (MYH6 antibody) at dilution of 1:20000 incubated at room temperature for 1.5 hours.



mouse heart tissue were subjected to SDS PAGE followed by western blot with 68461-1-Ig (MYH6 antibody) at dilution of 1:20000 incubated at room temperature for 1.5 hours.