

For Research Use Only

SMURF1 Monoclonal antibody

Catalog Number: 68466-1-Ig



Basic Information

Catalog Number: 68466-1-Ig	GenBank Accession Number: NM_020429	Purification Method: Protein G purification
Size: 150ul , Concentration: 1000 ug/ml by Nanodrop;	GeneID (NCBI): 57154	CloneNo.: 2A7E4
Source: Mouse	UNIPROT ID: Q9HCE7	Recommended Dilutions: WB 1:5000-1:50000
Isotype: IgG1	Full Name: SMAD specific E3 ubiquitin protein ligase 1	
Immunogen Catalog Number: AG30891	Calculated MW: 86 kDa	
	Observed MW: 86 kDa	

Applications

Tested Applications: WB, ELISA	Positive Controls:
Species Specificity: human, mouse	WB : LNCaP cells, HeLa cells, HEK-293 cells, MCF-7 cells, A549 cells, U2OS cells, NIH/3T3 cells

Background Information

SMURF1, also named as KIAA1625, is E3 ubiquitin-protein ligase which accepts ubiquitin from an E2 ubiquitin-conjugating enzyme in the form of a thioester and then directly transfers the ubiquitin to targeted substrates. SMURF1 interacts with receptor-regulated SMADs specific for the BMP pathway, SMAD1 and SMAD5, in order to trigger their ubiquitination and degradation and hence their inactivation. SMURF1 can be detected as 90-100 kDa when ubiquitinated (PMID:17576816, PMID:20484049).

Storage

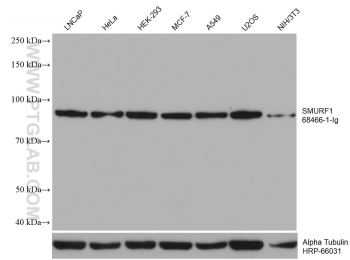
Storage:
Store at -20°C. Stable for one year after shipment.
Storage Buffer:
PBS with 0.02% sodium azide and 50% glycerol, pH7.3
Aliquoting is unnecessary for -20°C storage

*** 20ul sizes contain 0.1% BSA

For technical support and original validation data for this product please contact:
T: 1 (888) 4PTGLAB (1-888-478-4522) (toll free in USA), or 1(312) 455-8498 (outside USA)
E: proteintech@ptglab.com
W: ptglab.com

This product is exclusively available under Proteintech Group brand and is not available to purchase from any other manufacturer.

Selected Validation Data



Various lysates were subjected to SDS PAGE followed by western blot with 68466-1-Ig (SMURF1 antibody) at dilution of 1:10000 incubated at room temperature for 1.5 hours. The membrane was stripped and reblotted with HRP-conjugated Alpha Tubulin Monoclonal antibody (HRP-66031) as loading control.