

For Research Use Only

# MRPL28 Monoclonal antibody, PBS Only

Catalog Number: 68467-1-PBS



## Basic Information

**Catalog Number:**

68467-1-PBS

**Size:**

100ug , Concentration: 1mg/ml by Nanodrop;

**Source:**

Mouse

**Isotype:**

IgG1

**Immunogen Catalog Number:**

AG33198

**GenBank Accession Number:**

BC000990

**GeneID (NCBI):**

10573

**UNIPROT ID:**

Q13084

**Full Name:**

mitochondrial ribosomal protein L28

**Calculated MW:**

30 kDa

**Observed MW:**

30 kDa

**Purification Method:**

Protein G purification

**CloneNo.:**

2E6B2

## Applications

**Tested Applications:**

WB, IF/ICC, Indirect ELISA

**Species Specificity:**

human, mouse, rat

## Storage

**Storage:**

Store at -80°C.

**Storage Buffer:**

PBS only, pH7.3

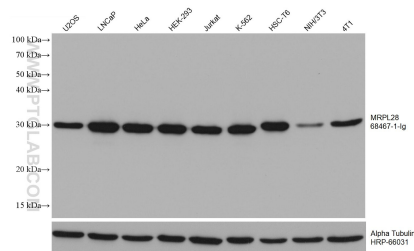
For technical support and original validation data for this product please contact:

T: 1 (888) 4PTGLAB (1-888-478-4522) (toll free in USA), or 1(312) 455-8498 (outside USA)

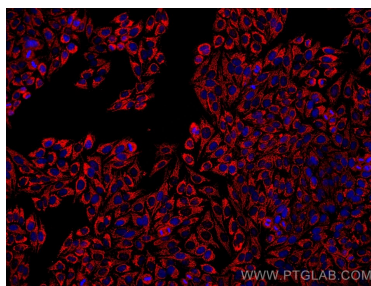
E: [proteintech@ptglab.com](mailto:proteintech@ptglab.com)  
W: [ptglab.com](http://ptglab.com)

This product is exclusively available under Proteintech Group brand and is not available to purchase from any other manufacturer.

## Selected Validation Data



Various lysates were subjected to SDS PAGE followed by western blot with 68467-1-Ig (MRPL28 antibody) at dilution of 1:10000 incubated at room temperature for 1.5 hours. The membrane was stripped and reblotted with HRP-conjugated Alpha Tubulin Monoclonal antibody (HRP-66031) as loading control. This data was developed using the same antibody clone with 68467-1-PBS in a different storage buffer formulation.



Immunofluorescent analysis of (4% PFA) fixed HepG2 cells using MRPL28 antibody (68467-1-Ig, Clone: 2E6B2) at dilution of 1:1000 and Multi-rAb CoraLite® Plus 594-Goat Anti-Mouse Recombinant Secondary Antibody (H+L) (Cat.NO. RGAM004). This data was developed using the same antibody clone with 68467-1-PBS in a different storage buffer formulation.