

For Research Use Only

PPA2 Monoclonal antibody

Catalog Number: 68468-1-Ig



Basic Information

Catalog Number: 68468-1-Ig	GenBank Accession Number: BC057219	Purification Method: Protein G purification
Size: 150ul , Concentration: 1000 ug/ml by Nanodrop;	GeneID (NCBI): 27068	CloneNo.: 1C2E3
Source: Mouse	UNIPROT ID: Q9H2U2	Recommended Dilutions: WB 1:5000-1:50000
Isotype: IgG1	Full Name: pyrophosphatase (inorganic) 2	
Immunogen Catalog Number: AG10125	Calculated MW: 305aa,35 kDa; 334aa,38 kDa	
	Observed MW: 34 kDa	

Applications

Tested Applications: WB, ELISA	Positive Controls: WB : U2OS cells, 4T1 cells, LNCaP cells, HeLa cells, HEK-293T cells, Jurkat cells, Raji cells, K-562 cells
Species Specificity: Human, mouse, rat	

Background Information

Pyrophosphatase 2 (PPA2) is a mitochondrial-located pyrophosphatase (PPase) that hydrolyzes inorganic pyrophosphate (PPi), generated by numerous nucleotide-dependent reactions, into two orthophosphate molecules (PMID: 34400813). PPA2 is a cardiomyopathy-associated protein, which has a greater physiological importance in mitochondrial function (PMID: 27523597).

Storage

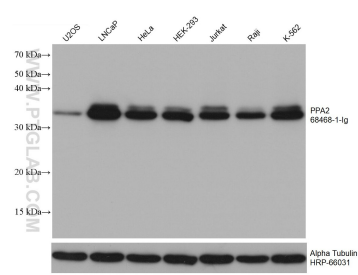
Storage:
Store at -20°C. Stable for one year after shipment.
Storage Buffer:
PBS with 0.02% sodium azide and 50% glycerol pH 7.3.
Aliquoting is unnecessary for -20°C storage

*** 20ul sizes contain 0.1% BSA

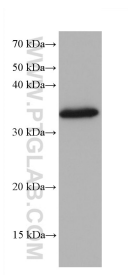
For technical support and original validation data for this product please contact:
T: 1 (888) 4PTGLAB (1-888-478-4522) (toll free in USA), or 1(312) 455-8498 (outside USA)
E: proteintech@ptglab.com
W: ptglab.com

This product is exclusively available under Proteintech Group brand and is not available to purchase from any other manufacturer.

Selected Validation Data



Various lysates were subjected to SDS PAGE followed by western blot with 68468-1-Ig (PPA2 antibody) at dilution of 1:20000 incubated at room temperature for 1.5 hours. The membrane was stripped and reblotted with HRP-conjugated Alpha Tubulin Monoclonal antibody (HRP-66031) as loading control.



4T1 cells were subjected to SDS PAGE followed by western blot with 68468-1-Ig (PPA2 antibody) at dilution of 1:20000 incubated at room temperature for 1.5 hours.