

For Research Use Only

# PPA2 Monoclonal antibody, PBS Only

Catalog Number: 68468-1-PBS



## Basic Information

<b>Catalog Number:</b> 68468-1-PBS	<b>GenBank Accession Number:</b> BC057219	<b>Purification Method:</b> Protein G purification
<b>Size:</b> 100ug, Concentration: 1 mg/ml by Nanodrop;	<b>GeneID (NCBI):</b> 27068	<b>CloneNo.:</b> 1C2E3
<b>Source:</b> Mouse	<b>UNIPROT ID:</b> Q9H2U2	
<b>Isotype:</b> IgG1	<b>Full Name:</b> pyrophosphatase (inorganic) 2	
<b>Immunogen Catalog Number:</b> AG10125	<b>Calculated MW:</b> 305aa,35 kDa; 334aa,38 kDa	
	<b>Observed MW:</b> 34 kDa	

## Applications

**Tested Applications:**  
WB, Indirect ELISA

**Species Specificity:**  
Human, mouse, rat

## Background Information

Pyrophosphatase 2 (PPA2) is a mitochondrial-located pyrophosphatase (PPase) that hydrolyzes inorganic pyrophosphate (PPi), generated by numerous nucleotide-dependent reactions, into two orthophosphate molecules (PMID: 34400813). PPA2 is a cardiomyopathy-associated protein, which has a greater physiological importance in mitochondrial function (PMID: 27523597).

## Storage

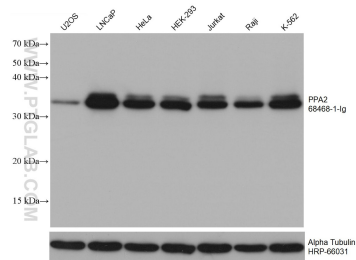
**Storage:**  
Store at -80°C.

**Storage Buffer:**  
PBS Only

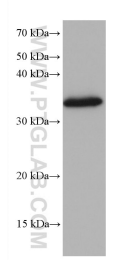
For technical support and original validation data for this product please contact:  
T: 1 (888) 4PTGLAB (1-888-478-4522) (toll free in USA), or 1(312) 455-8498 (outside USA)  
E: [proteintech@ptglab.com](mailto:proteintech@ptglab.com)  
W: [ptglab.com](http://ptglab.com)

This product is exclusively available under Proteintech Group brand and is not available to purchase from any other manufacturer.

## Selected Validation Data



Various lysates were subjected to SDS PAGE followed by western blot with 68468-1-Ig (PPA2 antibody) at dilution of 1:20000 incubated at room temperature for 1.5 hours. The membrane was stripped and reblotted with HRP-conjugated Alpha Tubulin Monoclonal antibody (HRP-66031) as loading control. This data was developed using the same antibody clone with 68468-1-PBS in a different storage buffer formulation.



4T1 cells were subjected to SDS PAGE followed by western blot with 68468-1-Ig (PPA2 antibody) at dilution of 1:20000 incubated at room temperature for 1.5 hours. This data was developed using the same antibody clone with 68468-1-PBS in a different storage buffer formulation.