

For Research Use Only

ECM1 Monoclonal antibody

Catalog Number: 68472-1-Ig



Basic Information

Catalog Number: 68472-1-Ig	GenBank Accession Number: BC023505	Purification Method: Protein G purification
Size: 150ul , Concentration: 1000 µg/ml by Nanodrop;	GeneID (NCBI): 1893	CloneNo.: 2D1A3
Source: Mouse	Full Name: extracellular matrix protein 1	Recommended Dilutions: WB 1:5000-1:50000
Isotype: IgG1	Calculated MW: 540 aa, 61 kDa	
	Observed MW: 60-80 kDa	

Applications

Tested Applications: WB, ELISA	Positive Controls: WB : hTERT-RPE1 cells, A431 cells, K-562 cells, human placenta tissue, human plasma, THP-1 cells
Species Specificity: Human	

Background Information

ECM1 (extracellular matrix protein 1), also known as URBWD. It is located in secreted, extracellular space, and extracellular matrix, which is mainly expressed in esophagus and gall bladder. The gene encodes a soluble protein that is involved in endochondral bone formation, angiogenesis, and tumor biology. It also interacts with a variety of extracellular and structural proteins, contributing to the maintenance of skin integrity and homeostasis. Mutations in this gene are associated with lipoid proteinosis disorder (also known as hyalinosis cutis et mucosae or Urbach-Wiethe disease) that is characterized by generalized thickening of skin, mucosae and certain viscera. The calculated molecular weight of ECM1 is 60 kDa, and this antibody can recognize the 63 kDa isoform of target, moreover, this protein may have glycosylation modification.

Storage

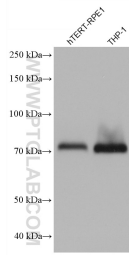
Storage:
Store at -20°C. Stable for one year after shipment.
Storage Buffer:
PBS with 0.02% sodium azide and 50% glycerol pH 7.3.
Aliquoting is unnecessary for -20°C storage

*** 20ul sizes contain 0.1% BSA

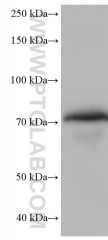
For technical support and original validation data for this product please contact:
T: 1 (888) 4PTGLAB (1-888-478-4522) (toll free in USA), or 1(312) 455-8498 (outside USA)
E: proteintech@ptglab.com
W: ptglab.com

This product is exclusively available under Proteintech Group brand and is not available to purchase from any other manufacturer.

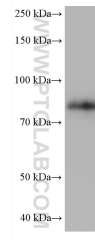
Selected Validation Data



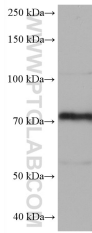
Various lysates were subjected to SDS PAGE followed by western blot with 68472-1-Ig (ECM1 antibody) at dilution of 1:20000 incubated at room temperature for 1.5 hours.



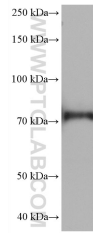
human plasma were subjected to SDS PAGE followed by western blot with 68472-1-Ig (ECM1 antibody) at dilution of 1:20000 incubated at room temperature for 1.5 hours.



human placenta tissue were subjected to SDS PAGE followed by western blot with 68472-1-Ig (ECM1 antibody) at dilution of 1:20000 incubated at room temperature for 1.5 hours.



A431 cells were subjected to SDS PAGE followed by western blot with 68472-1-Ig (ECM1 antibody) at dilution of 1:20000 incubated at room temperature for 1.5 hours.



K-562 cells were subjected to SDS PAGE followed by western blot with 68472-1-Ig (ECM1 antibody) at dilution of 1:20000 incubated at room temperature for 1.5 hours.