

For Research Use Only

# ECM1 Monoclonal antibody, PBS Only (Capture)

Catalog Number: 68472-1-PBS



## Basic Information

<b>Catalog Number:</b> 68472-1-PBS	<b>GenBank Accession Number:</b> BC023505	<b>Purification Method:</b> Protein G purification
<b>Size:</b> 100ug , Concentration: 1mg/ml by Nanodrop;	<b>GeneID (NCBI):</b> 1893	<b>CloneNo.:</b> 2D1A3
<b>Source:</b> Mouse	<b>UNIPROT ID:</b> Q16610	
<b>Isotype:</b> IgG1	<b>Full Name:</b> extracellular matrix protein 1	
<b>Immunogen Catalog Number:</b> EG0533	<b>Calculated MW:</b> 540 aa, 61 kDa	
	<b>Observed MW:</b> 60-80 kDa	

## Applications

**Tested Applications:**  
WB, IHC, Sandwich ELISA, Indirect ELISA, Sample test

**Species Specificity:**  
human

## Product Information

68472-1-PBS targets ECM1 as part of a matched antibody pair:

MP50074-1: 68472-1-PBS capture and 66023-1-PBS detection (validated in Sandwich ELISA)

Unconjugated mouse monoclonal antibody pair in PBS only (BSA and azide free) storage buffer at a concentration of 1 mg/mL, ready for conjugation.

This conjugation ready format makes antibodies ideal for use in many applications including: ELISAs, multiplex assays requiring matched pairs, mass cytometry, and multiplex imaging applications. Antibody use should be optimized by the end user for each application and assay.

## Background Information

ECM1 (extracellular matrix protein 1), also known as URBWD. It is located in secreted, extracellular space, and extracellular matrix, which is mainly expressed in esophagus and gall bladder. The gene encodes a soluble protein that is involved in endochondral bone formation, angiogenesis, and tumor biology. It also interacts with a variety of extracellular and structural proteins, contributing to the maintenance of skin integrity and homeostasis. Mutations in this gene are associated with lipoid proteinosis disorder (also known as hyalinosis cutis et mucosae or Urbach-Wiethe disease) that is characterized by generalized thickening of skin, mucosae and certain viscera. The calculated molecular weight of ECM1 is 60 kDa, and this antibody can recognize the 63 kDa isoform of target, moreover, this protein may have glycosylation modification.

## Storage

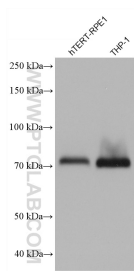
**Storage:**  
Store at -80°C.

**Storage Buffer:**  
PBS only, pH7.3

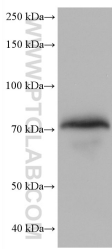
For technical support and original validation data for this product please contact:  
T: 1 (888) 4PTGLAB (1-888-478-4522) (toll free in USA), or 1(312) 455-8498 (outside USA)  
E: [proteintech@ptglab.com](mailto:proteintech@ptglab.com)  
W: [ptglab.com](http://ptglab.com)

This product is exclusively available under Proteintech Group brand and is not available to purchase from any other manufacturer.

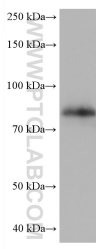
Selected Validation Data



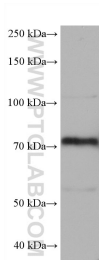
Various lysates were subjected to SDS PAGE followed by western blot with 68472-1-Ig (ECM1 antibody) at dilution of 1:20000 incubated at room temperature for 1.5 hours. This data was developed using the same antibody clone with 68472-1-PBS in a different storage buffer formulation.



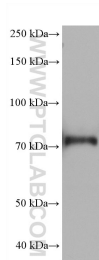
human plasma were subjected to SDS PAGE followed by western blot with 68472-1-Ig (ECM1 antibody) at dilution of 1:20000 incubated at room temperature for 1.5 hours. This data was developed using the same antibody clone with 68472-1-PBS in a different storage buffer formulation.



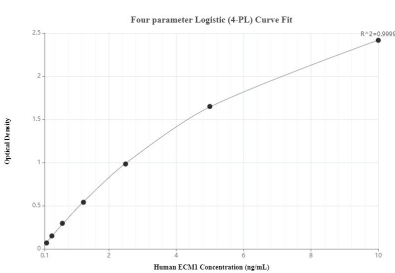
human placenta tissue were subjected to SDS PAGE followed by western blot with 68472-1-Ig (ECM1 antibody) at dilution of 1:20000 incubated at room temperature for 1.5 hours. This data was developed using the same antibody clone with 68472-1-PBS in a different storage buffer formulation.



A431 cells were subjected to SDS PAGE followed by western blot with 68472-1-Ig (ECM1 antibody) at dilution of 1:20000 incubated at room temperature for 1.5 hours. This data was developed using the same antibody clone with 68472-1-PBS in a different storage buffer formulation.



K-562 cells were subjected to SDS PAGE followed by western blot with 68472-1-Ig (ECM1 antibody) at dilution of 1:20000 incubated at room temperature for 1.5 hours. This data was developed using the same antibody clone with 68472-1-PBS in a different storage buffer formulation.



Sandwich ELISA standard curve of MP50074-1, ECM1 Monoclonal Matched Antibody Pair, PBS Only. Capture antibody: 68472-1-PBS. Detection antibody: 66023-1-PBS. Standard: Eg0533. Range: 0.156-10 ng/mL.



Immunohistochemical analysis of paraffin-embedded skin cancer slide using 68472-1-Ig (ECM1 antibody) at dilution of 1:4000 (under 20x lens). Heat mediated antigen retrieval with Tris-EDTA buffer (pH 9.0). This data was developed using the same antibody clone with 68472-1-PBS in a different storage buffer formulation.