

For Research Use Only

MEN1 Monoclonal antibody, PBS Only (Capture/Detector)

Catalog Number: 68473-1-PBS



Basic Information

Catalog Number: 68473-1-PBS	GenBank Accession Number: BC002544	Purification Method: Protein A purification
Size: 100ug , Concentration: 1mg/ml by Nanodrop;	GeneID (NCBI): 4221	CloneNo.: 3A6A11
Source: Mouse	UNIPROT ID: O00255	
Isotype: IgG1	Full Name: multiple endocrine neoplasia I	
Immunogen Catalog Number: AG7566	Calculated MW: 68 kDa	
	Observed MW: 68-70 kDa	

Applications

Tested Applications:
WB, IHC, Cytometric bead array, Indirect ELISA

Species Specificity:
human

Product Information

68473-1-PBS targets MEN1 as part of a matched antibody pair:

MP50886-1: 68473-2-PBS capture and 68473-1-PBS detection (validated in Cytometric bead array)

Unconjugated mouse monoclonal antibody pair in PBS only (BSA and azide free) storage buffer at a concentration of 1 mg/mL, ready for conjugation.

This conjugation ready format makes antibodies ideal for use in many applications including: ELISAs, multiplex assays requiring matched pairs, mass cytometry, and multiplex imaging applications. Antibody use should be optimized by the end user for each application and assay.

Background Information

MEN1, also named as Menin or MEI1, is a tumor suppressor protein encoded by the MEN1 gene. It is located in nucleus and ubiquitous expression in spleen and lymph node. The calculated molecular weight of MEN1 is 68 kDa. Its inactivation has been implicated in tumors of many endocrine tissues. Germline inactivating mutations of MEN1 gene are the main cause of multiple endocrine neoplasia type 1 (MEN1), a syndrome characterized by tumors in the pituitary gland, the parathyroid glands, and the enteropancreatic neuroendocrine tissues. Recent study shows astroglia menin deficiency leads to depressive-like behaviors in mice.

Storage

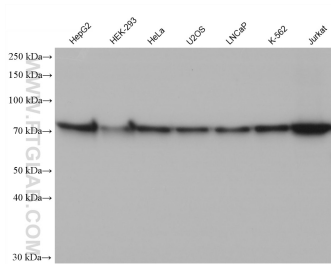
Storage:
Store at -80°C.

Storage Buffer:
PBS Only

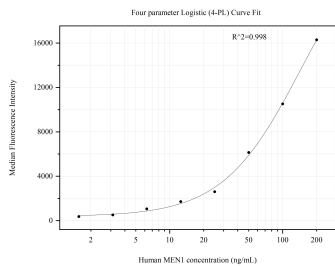
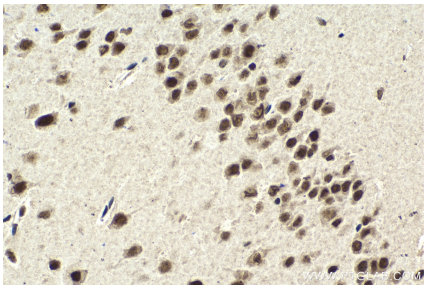
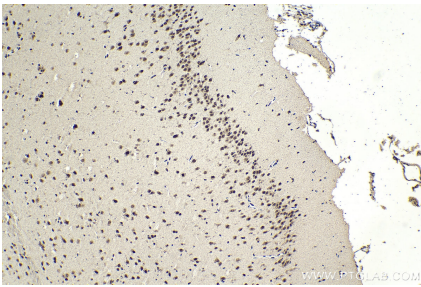
For technical support and original validation data for this product please contact:
T: 1 (888) 4PTGLAB (1-888-478-4522) (toll free in USA), or 1(312) 455-8498 (outside USA)
E: proteintech@ptglab.com
W: ptglab.com

This product is exclusively available under Proteintech Group brand and is not available to purchase from any other manufacturer.

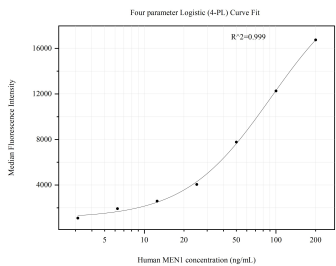
Selected Validation Data



Various lysates were subjected to SDS PAGE followed by western blot with 68473-1-Ig (MEN1 antibody) at dilution of 1:20000 incubated at room temperature for 1.5 hours. This data was developed using the same antibody clone with 68473-1-PBS in a different storage buffer formulation.



Cytometric bead array standard curve of MP50886-1, MEN1 Monoclonal Matched Antibody Pair, PBS Only. Capture antibody: 68473-2-PBS. Detection antibody: 68473-1-PBS. Standard:Ag7566. Range: 1.563-200 ng/mL.



Cytometric bead array standard curve of MP50886-2, MEN1 Monoclonal Matched Antibody Pair, PBS Only. Capture antibody: 68473-1-PBS. Detection antibody: 68473-3-PBS. Standard:null. Range: null.