

For Research Use Only

AMY2B Monoclonal antibody

Catalog Number: 68474-1-Ig



Basic Information

Catalog Number: 68474-1-Ig	GenBank Accession Number: BC011179	Purification Method: Protein G purification
Size: 150ul , Concentration: 1000 ug/ml by Nanodrop;	GeneID (NCBI): 280	CloneNo.: 2E5G2
Source: Mouse	UNIPROT ID: P19961	Recommended Dilutions: WB 1:5000-1:50000
Isotype: IgG1	Full Name: amylase, alpha 2B (pancreatic)	
Immunogen Catalog Number: AG3260	Calculated MW: 511 aa, 58 kDa	
	Observed MW: 50 kDa	

Applications

Tested Applications: WB, ELISA	Positive Controls: WB : pig pancreas tissue, rat pancreas tissue mouse pancreas tissue
Species Specificity: human, mouse, rat, pig	

Background Information

AMY2B(alpha-amylase 2B) belongs to the glycosyl hydrolase 13 family. This protein is involved in the endohydrolysis of 1,4-alpha-glucosidic linkages in oligosaccharides and polysaccharides. Human amylases (Amy1, Amy2A, and Amy2B) commonly have two potential N-glycosylation sites (N427 and N476) in their C-terminal region (S Takashima, J Amano, 2012).

Storage

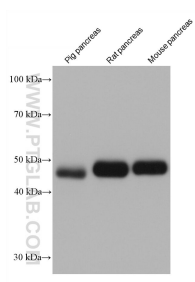
Storage:
Store at -20°C. Stable for one year after shipment.
Storage Buffer:
PBS with 0.02% sodium azide and 50% glycerol, pH7.3
Aliquoting is unnecessary for -20°C storage

*** 20ul sizes contain 0.1% BSA

For technical support and original validation data for this product please contact:
T: 1 (888) 4PTGLAB (1-888-478-4522) (toll free in USA), or 1(312) 455-8498 (outside USA)
E: proteintech@ptglab.com
W: ptglab.com

This product is exclusively available under Proteintech Group brand and is not available to purchase from any other manufacturer.

Selected Validation Data



Various lysates were subjected to SDS PAGE followed by western blot with 68474-1-Ig (AMY2B antibody) at dilution of 1:20000 incubated at room temperature for 1.5 hours.