

For Research Use Only

Lamin B2 Monoclonal antibody

Catalog Number: 68475-1-Ig



Basic Information

Catalog Number: 68475-1-Ig	GenBank Accession Number: BC006551	Purification Method: Protein G purification
Size: 150ul, Concentration: 1000 µg/ml by Nanodrop;	GeneID (NCBI): 84823	CloneNo.: 2C7B1
Source: Mouse	Full Name: lamin B2	Recommended Dilutions: WB 1:5000-1:50000
Isotype: IgG1	Calculated MW: 68 kDa	
Immunogen Catalog Number: AG33296	Observed MW: 68 kDa	

Applications

Tested Applications: WB, ELISA	Positive Controls: WB: A549 cells, LNCaP cells, HeLa cells, HEK-293 cells, HepG2 cells, Jurkat cells, K-562 cells, HSC-T6 cells, NIH/3T3 cells
Species Specificity: Human, mouse, rat	

Background Information

Lamins are nuclear membrane structural components that are important in structural integrity of the nucleus and may also interact with chromatin (PMID: 33033404). Research studies show that lamin B2 knockout mice exhibit neuronal developmental defects and that both proteins are essential for typical brain development (PMID: 20145110). Mutations in Lamin B2 can result in a susceptibility to developing acquired partial lipodystrophy, a rare disorder characterized by the progressive loss of subcutaneous fat in a bilaterally symmetrical fashion (PMID: 16826530).

Storage

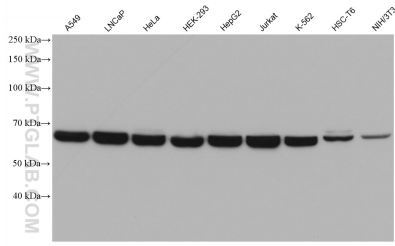
Storage:
Store at -20°C. Stable for one year after shipment.
Storage Buffer:
PBS with 0.02% sodium azide and 50% glycerol pH 7.3.
Aliquoting is unnecessary for -20°C storage

*** 20ul sizes contain 0.1% BSA

For technical support and original validation data for this product please contact:
T: 1 (888) 4PTGLAB (1-888-478-4522) (toll free in USA), or 1(312) 455-8498 (outside USA) E: proteintech@ptglab.com W: ptglab.com

This product is exclusively available under Proteintech Group brand and is not available to purchase from any other manufacturer.

Selected Validation Data



Various lysates were subjected to SDS PAGE followed by western blot with 68475-1-Ig (Lamin B2 antibody) at dilution of 1:20000 incubated at room temperature for 1.5 hours.