

For Research Use Only

# CRYBB2 Monoclonal antibody, PBS Only



Catalog Number: 68481-1-PBS

## Basic Information

Catalog Number:

68481-1-PBS

Size:

100ug, Concentration: 1 mg/ml by Nanodrop;

Source:

Mouse

Isotype:

IgG1

Immunogen Catalog Number:

AG12916

GenBank Accession Number:

BC069535

GeneID (NCBI):

1415

UNIPROT ID:

P43320

Full Name:

crystallin, beta B2

Calculated MW:

205 aa, 23 kDa

Observed MW:

24 kDa

Purification Method:

Protein A purification

CloneNo.:

2E5E7

## Applications

Tested Applications:

WB, Indirect ELISA

Species Specificity:

Human, rabbit, rat, mouse

## Storage

Storage:

Store at -80°C.

Storage Buffer:

PBS Only

For technical support and original validation data for this product please contact:

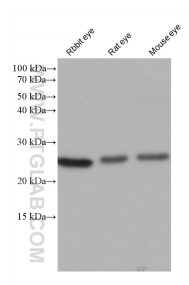
T: 1 (888) 4PTGLAB (1-888-478-4522) (toll free in USA), or 1(312) 455-8498 (outside USA)

E: [proteintech@ptglab.com](mailto:proteintech@ptglab.com)

W: [ptglab.com](http://ptglab.com)

This product is exclusively available under Proteintech Group brand and is not available to purchase from any other manufacturer.

## Selected Validation Data



Various lysates were subjected to SDS PAGE followed by western blot with 68481-1-Ig (CRYBB2 antibody) at dilution of 1:10000 incubated at room temperature for 1.5 hours. This data was developed using the same antibody clone with 68481-1-PBS in a different storage buffer formulation.