

For Research Use Only

PISD Monoclonal antibody

Catalog Number: 68484-1-Ig



Basic Information

Catalog Number: 68484-1-Ig	GenBank Accession Number: BC001482	Purification Method: Protein G purification
Size: 150ul , Concentration: 1000 ug/ml by Nanodrop;	GeneID (NCBI): 23761	CloneNo.: 3B6C1
Source: Mouse	UNIPROT ID: Q9UG56	Recommended Dilutions: WB 1:5000-1:50000
Isotype: IgG1	Full Name: phosphatidylserine decarboxylase	
Immunogen Catalog Number: AG9499	Calculated MW: 375aa,43 kDa; 408aa,46 kDa	
	Observed MW: 46 kDa	

Applications

Tested Applications: WB, ELISA	Positive Controls:
Species Specificity: Human, mouse, rat	WB : A549 cells, LNCaP cells, HeLa cells, HEK-293 cells, HepG2 cells, Jurkat cells, K-562 cells, HSC-T6 cells, NIH/3T3 cells

Background Information

PISD(Phosphatidylserine decarboxylase proenzyme) belongs to the phosphatidylserine decarboxylase family.It contains a conserved LGST motif that functions as an autocatalytic cleavage site where the proenzyme is split into mature alpha and beta subunits.It has 2 isoforms produced by alternative splicing.

Storage

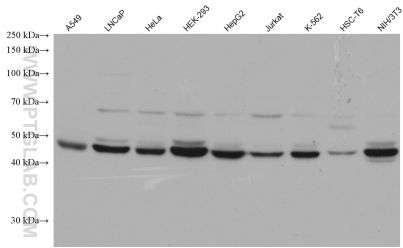
Storage:
Store at -20°C. Stable for one year after shipment.
Storage Buffer:
PBS with 0.02% sodium azide and 50% glycerol pH 7.3.
Aliquoting is unnecessary for -20°C storage

*** 20ul sizes contain 0.1% BSA

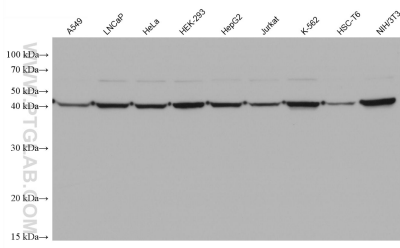
For technical support and original validation data for this product please contact:
T: 1 (888) 4PTGLAB (1-888-478-4522) (toll free in USA), or 1(312) 455-8498 (outside USA)
E: proteintech@ptglab.com
W: ptglab.com

This product is exclusively available under Proteintech Group brand and is not available to purchase from any other manufacturer.

Selected Validation Data



Various lysates were subjected to SDS PAGE followed by western blot with 68484-1-Ig (PISD antibody) at dilution of 1:10000 incubated at room temperature for 1.5 hours.



Various lysates were subjected to SDS PAGE followed by western blot with 68484-1-Ig (PISD antibody) at dilution of 1:20000 incubated at room temperature for 1.5 hours.