

For Research Use Only

PYCR2 Monoclonal antibody

Catalog Number: 68488-1-Ig



Basic Information

Catalog Number:

68488-1-Ig

Size:

150ul, Concentration: 500 ug/ml by Nanodrop;

Source:

Mouse

Isotype:

IgG1

Immunogen Catalog Number:

AG10923

GenBank Accession Number:

BC020553

GeneID (NCBI):

29920

UNIPROT ID:

Q96C36

Full Name:

pyrroline-5-carboxylate reductase family, member 2

Calculated MW:

320 aa, 34 kDa

Observed MW:

34 kDa

Purification Method:

Protein G purification

CloneNo.:

2G7D9

Recommended Dilutions:

WB 1:5000-1:20000

Applications

Tested Applications:

WB, ELISA

Species Specificity:

Human

Positive Controls:

WB : Jurkat cells, LNCaP cells, K-562 cells, THP-1 cells, HEK-293 cells

Background Information

PYCR2, also named as P5CR2, belongs to the pyrroline-5-carboxylate reductase family. It catalyses the reaction: L-proline + NAD(P)⁺ = 1-pyrroline-5-carboxylate + NAD(P)H. This antibody may have cross reaction to PYCR1 due to the high homology.

Storage

Storage:

Store at -20°C. Stable for one year after shipment.

Storage Buffer:

PBS with 0.02% sodium azide and 50% glycerol pH 7.3.

Aliquoting is unnecessary for -20°C storage

*** 20ul sizes contain 0.1% BSA

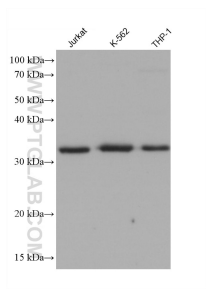
For technical support and original validation data for this product please contact:

T: 1 (888) 4PTGLAB (1-888-478-4522) (toll free in USA), or 1(312) 455-8498 (outside USA)

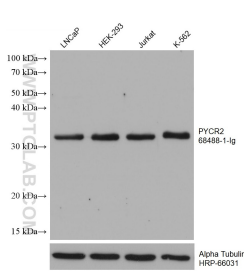
E: proteintech@ptglab.com
W: ptglab.com

This product is exclusively available under Proteintech Group brand and is not available to purchase from any other manufacturer.

Selected Validation Data



Various lysates were subjected to SDS PAGE followed by western blot with 68488-1-Ig (PYCR2 antibody) at dilution of 1:10000 incubated at room temperature for 1.5 hours.



Various lysates were subjected to SDS PAGE followed by western blot with 68488-1-Ig (PYCR2 antibody) at dilution of 1:20000 incubated at room temperature for 1.5 hours. The membrane was stripped and reblotted with HRP-conjugated Alpha Tubulin Monoclonal antibody (HRP-66031) as loading control.