

For Research Use Only

# OTUB1 Monoclonal antibody

Catalog Number: 68489-1-Ig



## Basic Information

<b>Catalog Number:</b> 68489-1-Ig	<b>GenBank Accession Number:</b> BC007519	<b>Purification Method:</b> Protein A purification
<b>Size:</b> 150ul , Concentration: 1000 µg/ml by Nanodrop;	<b>GeneID (NCBI):</b> 55611	<b>CloneNo.:</b> 2F7F8
<b>Source:</b> Mouse	<b>Full Name:</b> OTU domain, ubiquitin aldehyde binding 1	<b>Recommended Dilutions:</b> WB 1:5000-1:50000
<b>Isotype:</b> IgG2a	<b>Calculated MW:</b> 31 kDa and 35 kDa	
<b>Immunogen Catalog Number:</b> AG33132	<b>Observed MW:</b> 31-35 kDa	

## Applications

**Tested Applications:**  
WB, ELISA

**Species Specificity:**  
Human, Mouse, Rat

**Positive Controls:**

**WB :** U2OS cells, LNCaP cells, HeLa cells, HEK-293 cells, K-562 cells, HSC-T6 cells, NIH/3T3 cells, 4T1 cells

## Background Information

OTUB1 belongs to the ovarian tumor domain protease (OTU) subfamily of deubiquitinases, which could block ubiquitination leading to protein stability. OTUB1 mainly prefers k-48 and k-63 ubiquitin chains type, especially in k-48 ubiquitin chain. OTUB1 performs its deubiquitinating function via two distinct manners: the canonical and non-canonical manner. OTUB1 is involved in many critical immune response processes, containing CD8 T cell activation, PD-L1 related immune evasion, and several infectious diseases. OTUB1 plays an important role in the occurrence, proliferation, invasion, and progression of various cancers, such as bladder cancer, breast cancer, prostate cancer, and colorectal cancer (PMID: 34875341, 35296795). OTUB1 has 2 isoforms with molecular weights of 31 and 35 kDa, respectively.

## Storage

**Storage:**  
Store at -20°C. Stable for one year after shipment.

**Storage Buffer:**  
PBS with 0.02% sodium azide and 50% glycerol pH 7.3.

Aliquoting is unnecessary for -20°C storage

\*\*\* 20ul sizes contain 0.1% BSA

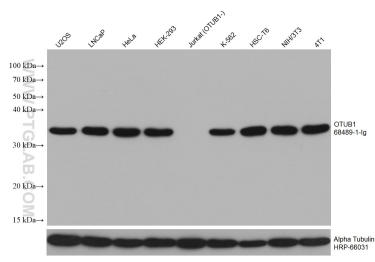
For technical support and original validation data for this product please contact:

T: 1 (888) 4PTGLAB (1-888-478-4522) (toll free  
in USA), or 1(312) 455-8498 (outside USA)

E: [proteintech@ptglab.com](mailto:proteintech@ptglab.com)  
W: [ptglab.com](http://ptglab.com)

This product is exclusively available under Proteintech Group brand and is not available to purchase from any other manufacturer.

## Selected Validation Data



Various lysates were subjected to SDS PAGE followed by western blot with 68489-1-g (OTUB1 antibody) at dilution of 1:20000 incubated at room temperature for 1.5 hours.