

For Research Use Only

ABCF2 Monoclonal antibody

Catalog Number: 68490-1-Ig



Basic Information

Catalog Number: 68490-1-Ig	GenBank Accession Number: BC001661	Purification Method: Protein A purification
Size: 150ul , Concentration: 1000 ug/ml by Nanodrop;	GeneID (NCBI): 10061	CloneNo.: 3E9C9
Source: Mouse	UNIPROT ID: Q9UG63	Recommended Dilutions: WB 1:5000-1:50000
Isotype: IgG2a	Full Name: ATP-binding cassette, sub-family F (GCN20), member 2	
Immunogen Catalog Number: AG33824	Calculated MW: 71 kDa	
	Observed MW: 71 kDa	

Applications

Tested Applications: WB, ELISA	Positive Controls: WB : HeLa cells, MCF-7 cells, MDA-MB-231 cells, Jurkat cells, MOLT-4 cells, K-562 cells, HSC-T6 cells, NIH/3T3 cells, 4T1 clls
Species Specificity: Human, mouse, rat	

Background Information

ABCF2 (ABC28, M-ABC1, HUSSY-18, EST133090, DKFZp586K1823) is a member of the superfamily of ATP-binding cassette (ABC) transporters. ABC proteins are composed of transmembrane domains (TMDs), and nucleotide binding domains (NBDs, or ATP-binding cassettes, ABSs). Based on their sequence similarity scores, the members of the human ABC protein family can be grouped into eight subfamilies, including the MDR/TAP, the ALD, the MRP/CFTR, the ABC1, the White, the RNaseL inhibitor, the ANSA, and the GCN20 subfamilies. ABCF2 is a member of the GCN20 subfamily. ABC proteins transport various molecules across extra- and intracellular membranes.

Storage

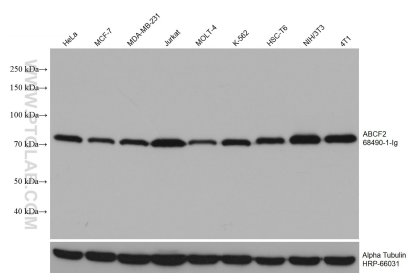
Storage:
Store at -20°C. Stable for one year after shipment.
Storage Buffer:
PBS with 0.02% sodium azide and 50% glycerol pH 7.3.
Aliquoting is unnecessary for -20°C storage

*** 20ul sizes contain 0.1% BSA

For technical support and original validation data for this product please contact:
T: 1 (888) 4PTGLAB (1-888-478-4522) (toll free in USA), or 1(312) 455-8498 (outside USA)
E: proteintech@ptglab.com
W: ptglab.com

This product is exclusively available under Proteintech Group brand and is not available to purchase from any other manufacturer.

Selected Validation Data



Various lysates were subjected to SDS PAGE followed by western blot with 68490-1-Ig (ABCF2 antibody) at dilution of 1:20000 incubated at room temperature for 1.5 hours. The membrane was stripped and reblotted with HRP-conjugated Alpha Tubulin Monoclonal antibody (HRP-66031) as loading control.