

# ABCF2 Monoclonal antibody, PBS Only

Catalog Number: 68490-1-PBS

## Basic Information

<b>Catalog Number:</b> 68490-1-PBS	<b>GenBank Accession Number:</b> BC001661	<b>Purification Method:</b> Protein A purification
<b>Size:</b> 100ug , Concentration: 1 mg/ml by Nanodrop;	<b>GeneID (NCBI):</b> 10061	<b>CloneNo.:</b> 3E9C9
<b>Source:</b> Mouse	<b>UNIPROT ID:</b> Q9UG63	
<b>Isotype:</b> IgG2a	<b>Full Name:</b> ATP-binding cassette, sub-family F (GCN20), member 2	
<b>Immunogen Catalog Number:</b> AG33824	<b>Calculated MW:</b> 71 kDa	
	<b>Observed MW:</b> 71 kDa	

## Applications

**Tested Applications:**  
WB, ELISA

**Species Specificity:**  
Human, mouse, rat

## Background Information

ABCF2 (ABC28, M-ABC1, HUSSY-18, EST133090, DKFZp586K1823) is a member of the superfamily of ATP-binding cassette (ABC) transporters. ABC proteins are composed of transmembrane domains (TMDs), and nucleotide binding domains (NBDs, or ATP-binding cassettes, ABSs). Based on their sequence similarity scores, the members of the human ABC protein family can be grouped into eight subfamilies, including the MDR/TAP, the ALD, the MRP/CFTR, the ABC1, the White, the RNaseL inhibitor, the ANSA, and the GCN20 subfamilies. ABCF2 is a member of the GCN20 subfamily. ABC proteins transport various molecules across extra- and intracellular membranes.

## Storage

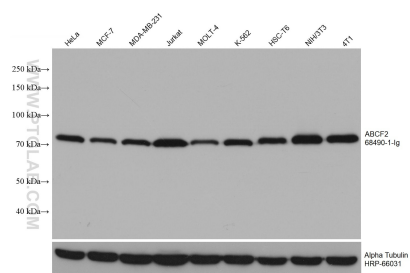
**Storage:**  
Store at -80°C.

**Storage Buffer:**  
PBS only

For technical support and original validation data for this product please contact:  
T: 1 (888) 4PTGLAB (1-888-478-4522) (toll free in USA), or 1(312) 455-8498 (outside USA)  
E: [proteintech@ptglab.com](mailto:proteintech@ptglab.com)  
W: [ptglab.com](http://ptglab.com)

This product is exclusively available under Proteintech Group brand and is not available to purchase from any other manufacturer.

## Selected Validation Data



Various lysates were subjected to SDS PAGE followed by western blot with 68490-1-Ig (ABCF2 antibody) at dilution of 1:20000 incubated at room temperature for 1.5 hours. The membrane was stripped and reblotted with HRP-conjugated Alpha Tubulin Monoclonal antibody (HRP-66031) as loading control. This data was developed using the same antibody clone with 68490-1-PBS in a different storage buffer formulation.